



# Welcome to Washington

Washington State Dept. of Natural Resources

In-Briefing

# Our Vision

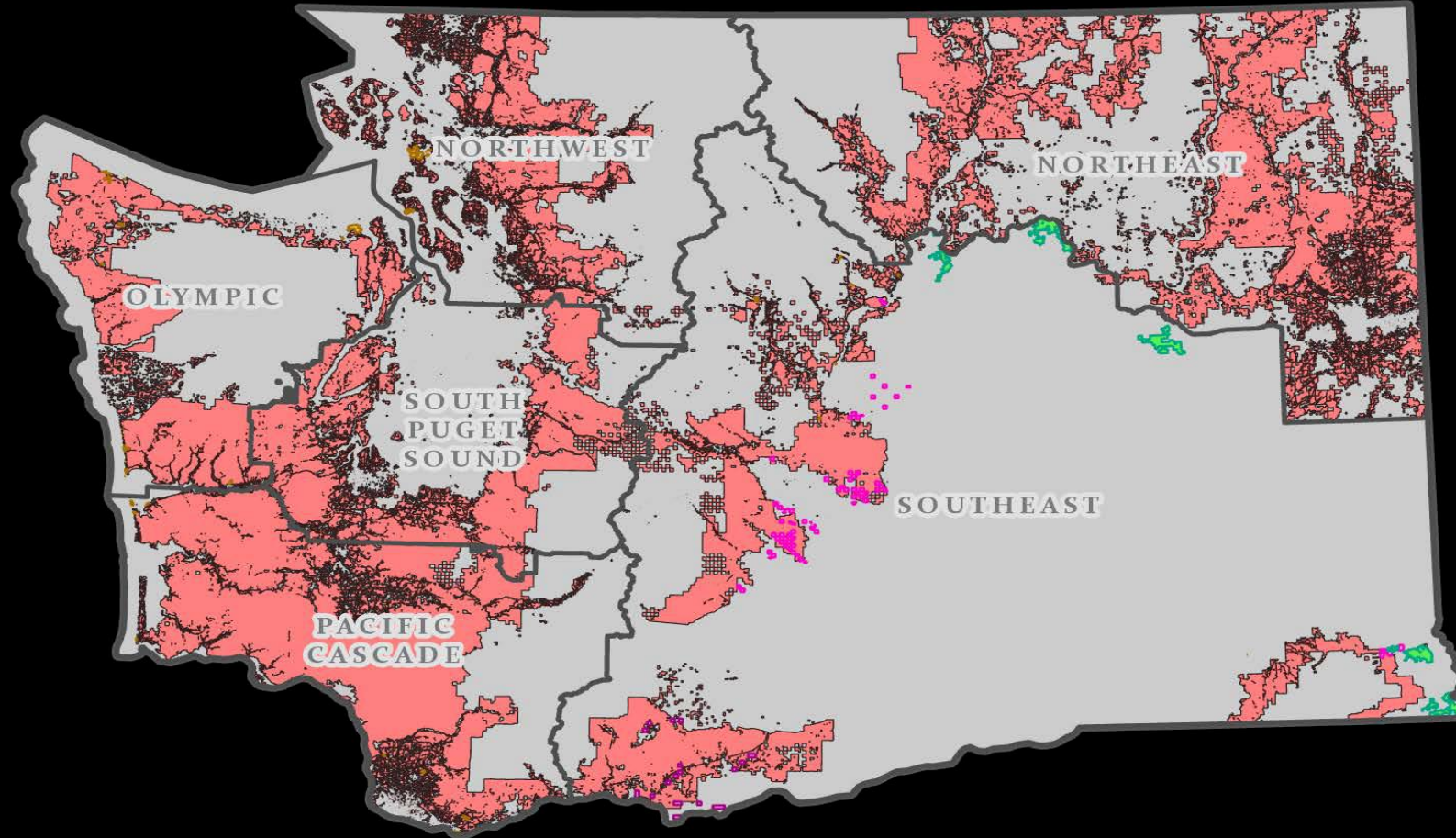


## ***All Washington—safely managing and living with wildland fire***

Working collaboratively across jurisdictional boundaries and with engaged communities, we safeguard what we value. All of Washington is adapted and prepared, and our landscapes are healthy and resilient. We prevent wildland fire, use fire where allowable, and safely suppress unwanted fire.



# Regions and Jurisdiction





# Region Offices

SE Region- Ellensburg 509-925-8519

-CWICC Dispatch- 509-884-3471

NE Region- Colville 509-684-7474

-NEWICC Dispatch-509-685-6900

NW Region- Sedro Woolley 360-856-3500

-Northwest Dispatch- 360-854-2878

SPS Region-Enumclaw- 360-825-1631

-South Puget Dispatch- 360-802-7080

PC Region- Castle Rock- 360-577-2025

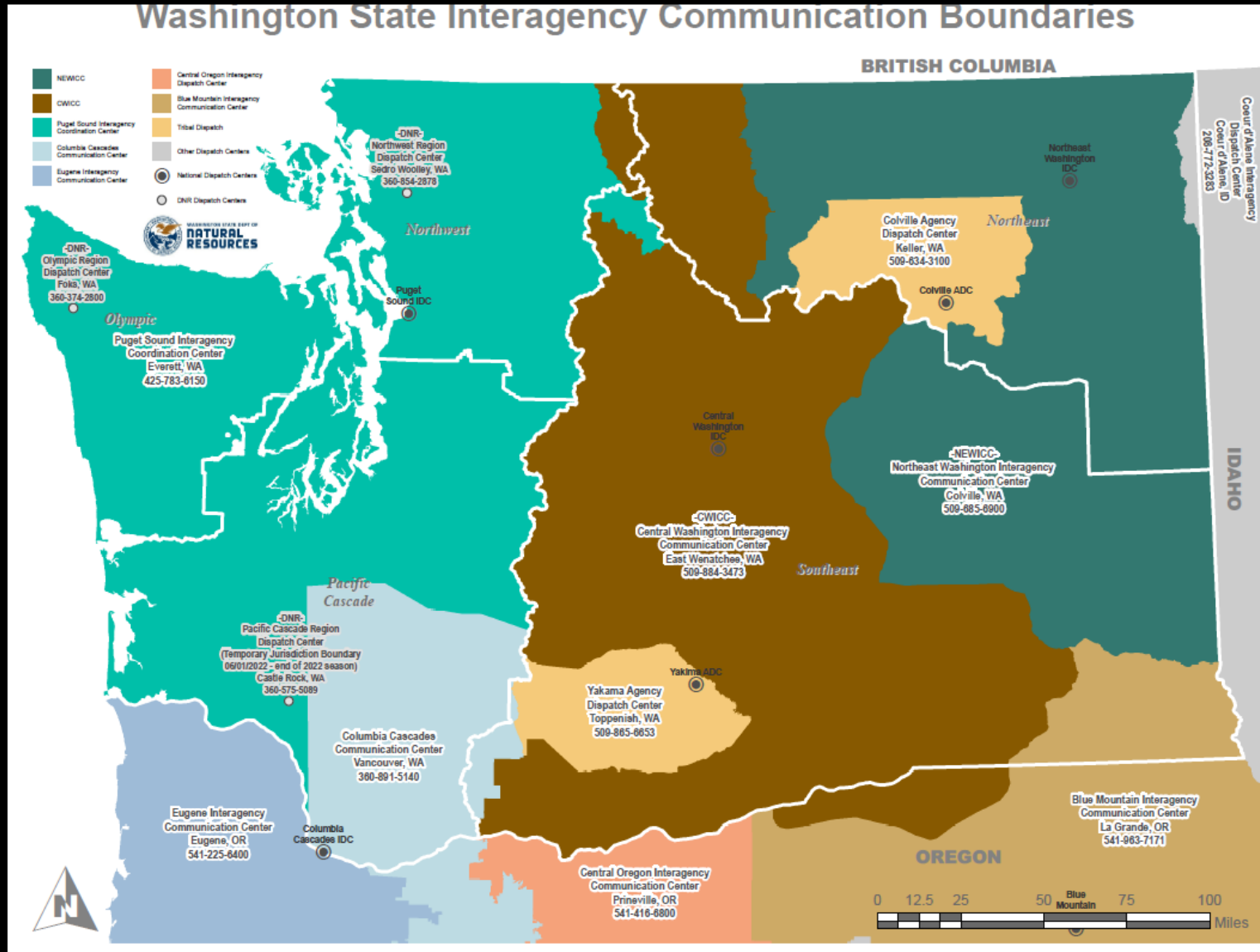
-Pacific Cascade Dispatch- 360-575-5089

Olympic Region- Forks- 360-374-2800

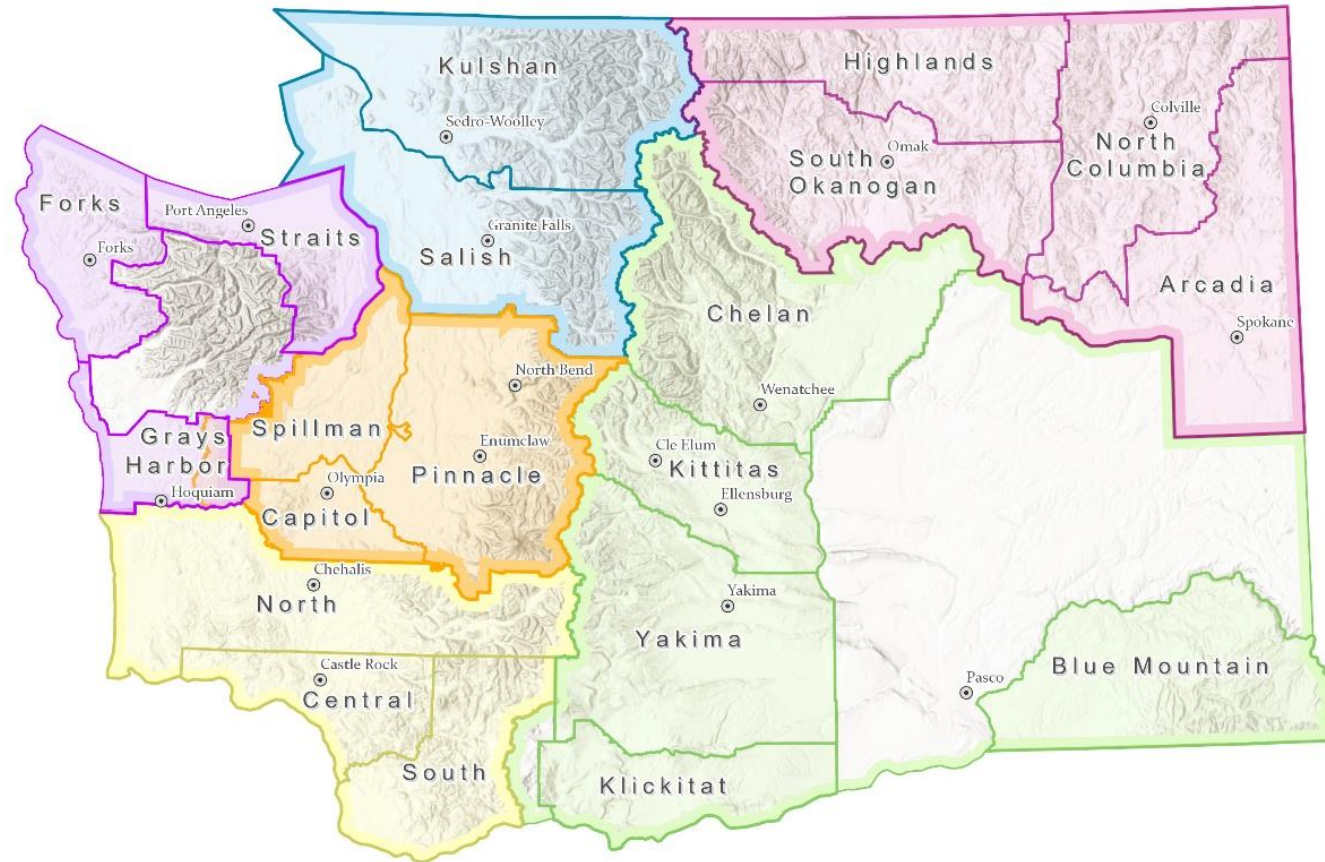
Olympic Dispatch- 360-374-2811



# Dispatch Areas



# Fire Units





# Radio Repeater

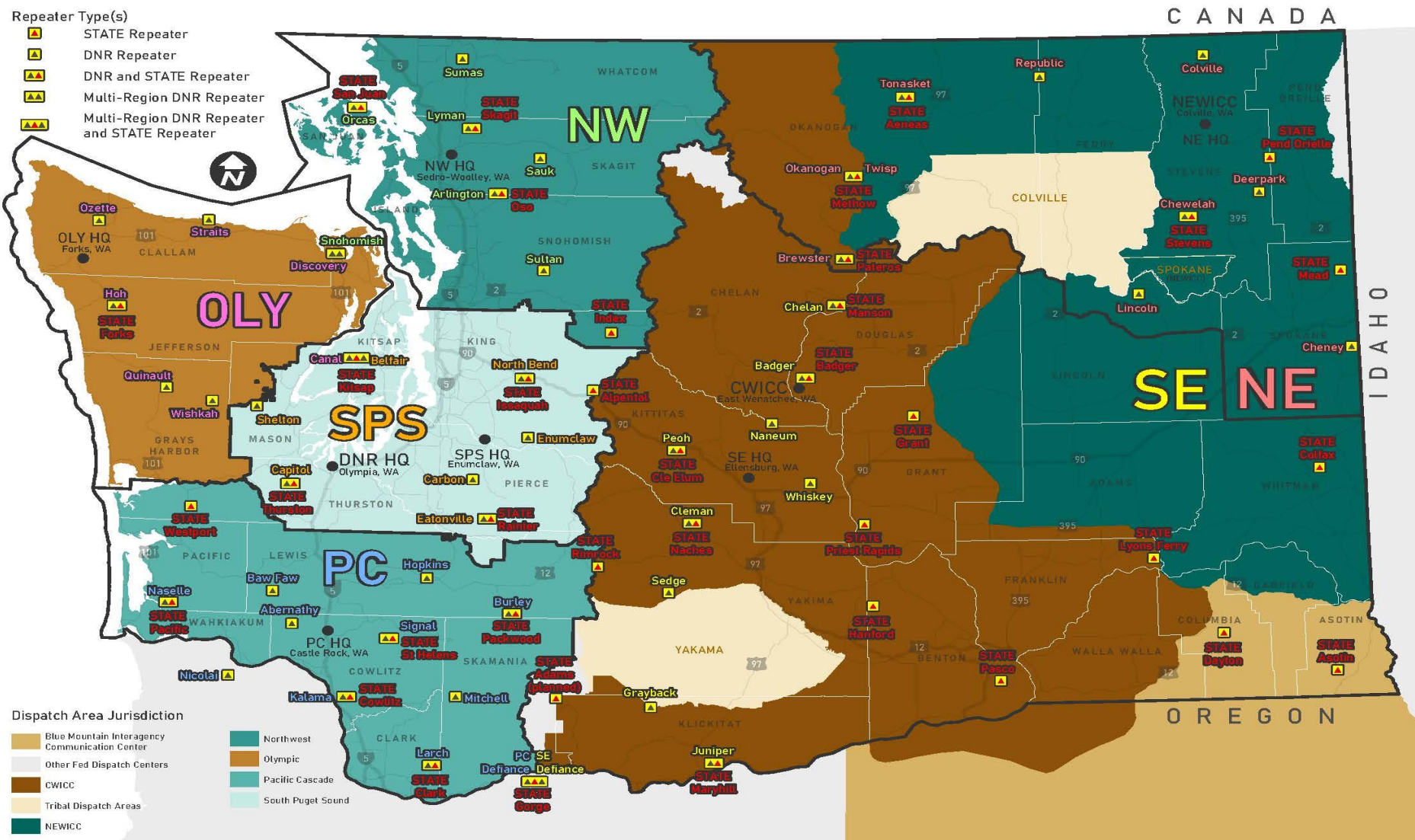


## Statewide DNR Repeater Locations including dispatch areas

DNR Radio Operations Program - updated: 02/17/2021

### Repeater Type(s)

- STATE Repeater
- DNR Repeater
- DNR and STATE Repeater
- Multi-Region DNR Repeater
- Multi-Region DNR Repeater and STATE Repeater



### Dispatch Area Jurisdiction

- Blue Mountain Interagency Communication Center
- Other Fed Dispatch Centers
- CWICC
- Tribal Dispatch Areas
- NEWICC
- Northwest
- Olympic
- Pacific Cascade
- South Puget Sound