



Oregon Department of Forestry

Orientation to Fighting Fire In Oregon



Presentation Overview

- Overview of Oregon's forests
- Introduction to ODF and Fire Protection Division
- Statewide Coordination and Resources
- Fire History and Fire Environment
- Fire Finance
- Risk Management and Safety

Keep cell phones handy for capturing links to websites shown in this presentation

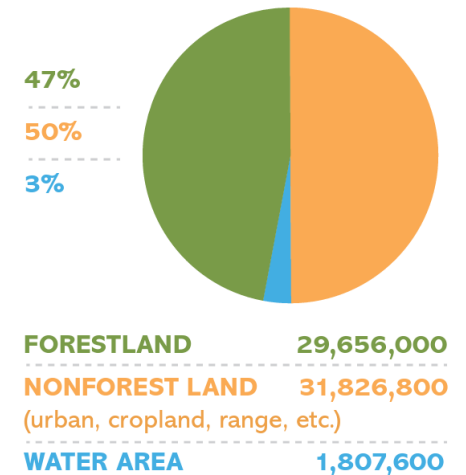
Oregon's Forests



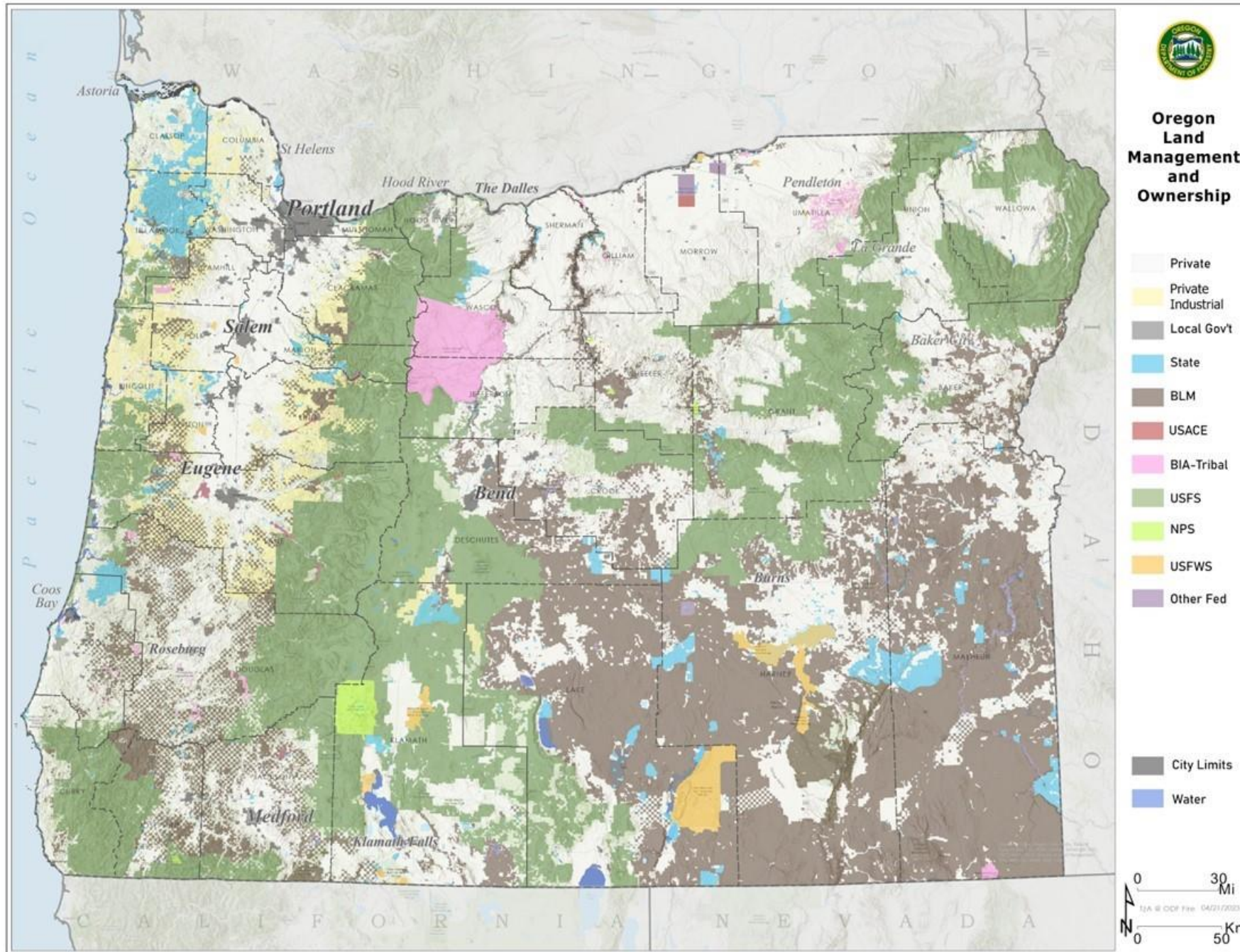
- Approximately ~30 million of acres of forestland
- Diverse conditions - Coastal strip to Chaparral to High Desert
- **ODF protects ~16 million acres**
- 100+ year premise remains constant - protect Oregon's forest land through aggressive IA to contain cost and minimize resource loss
- Fire Protection is a partnership (landowners, ODF and the State)
- Protection responsibility is intermingled with 1,000s of miles of common boundaries

"Fires don't recognize these boundaries"

Oregon total land area (acres)

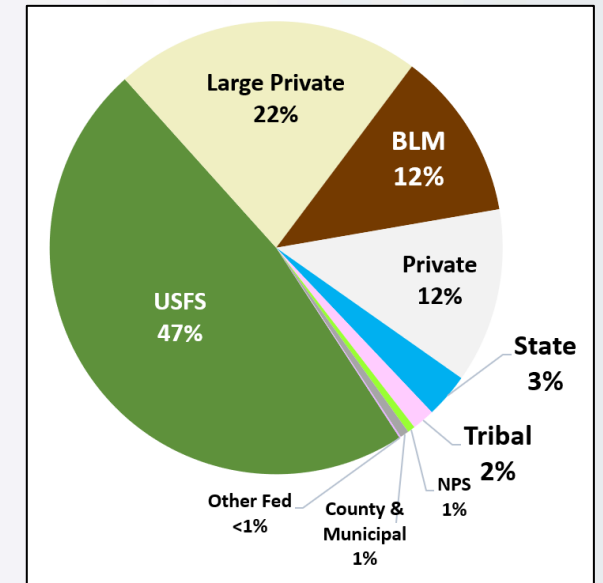


Acreages from OFRI 2023 Forest Facts



Land Management & Ownership

Forestland Ownership

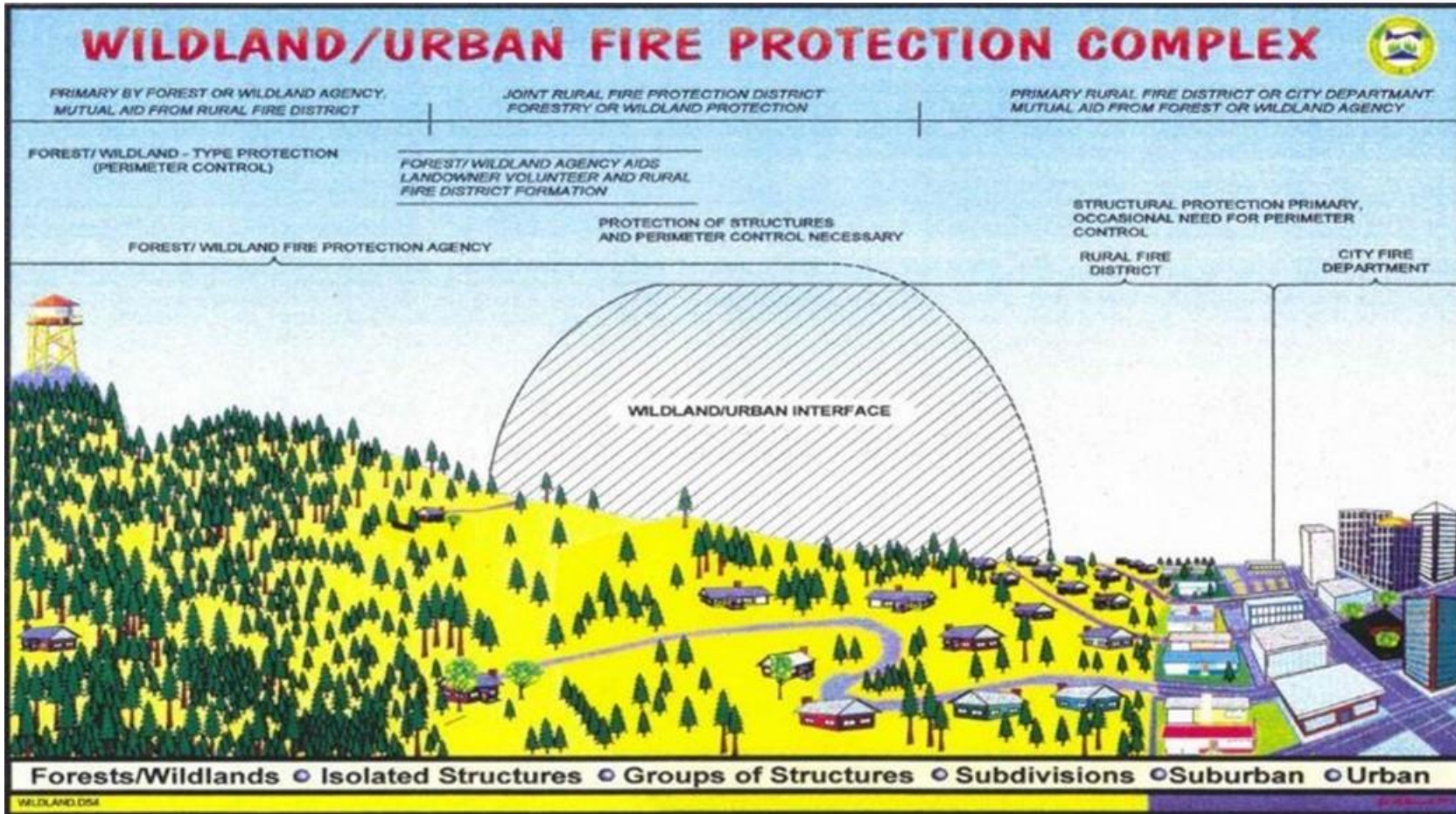


Forestland Ownership acreages from OFRI 2023 Forest Facts



Overlapping Protection Systems

- wildland
- wildland-urban-interface (WUI)
- rural
- structural





Introduction to ODF

- *Agency Organization*
 - *Salem, Field*
- *ODF Protected Lands Map*



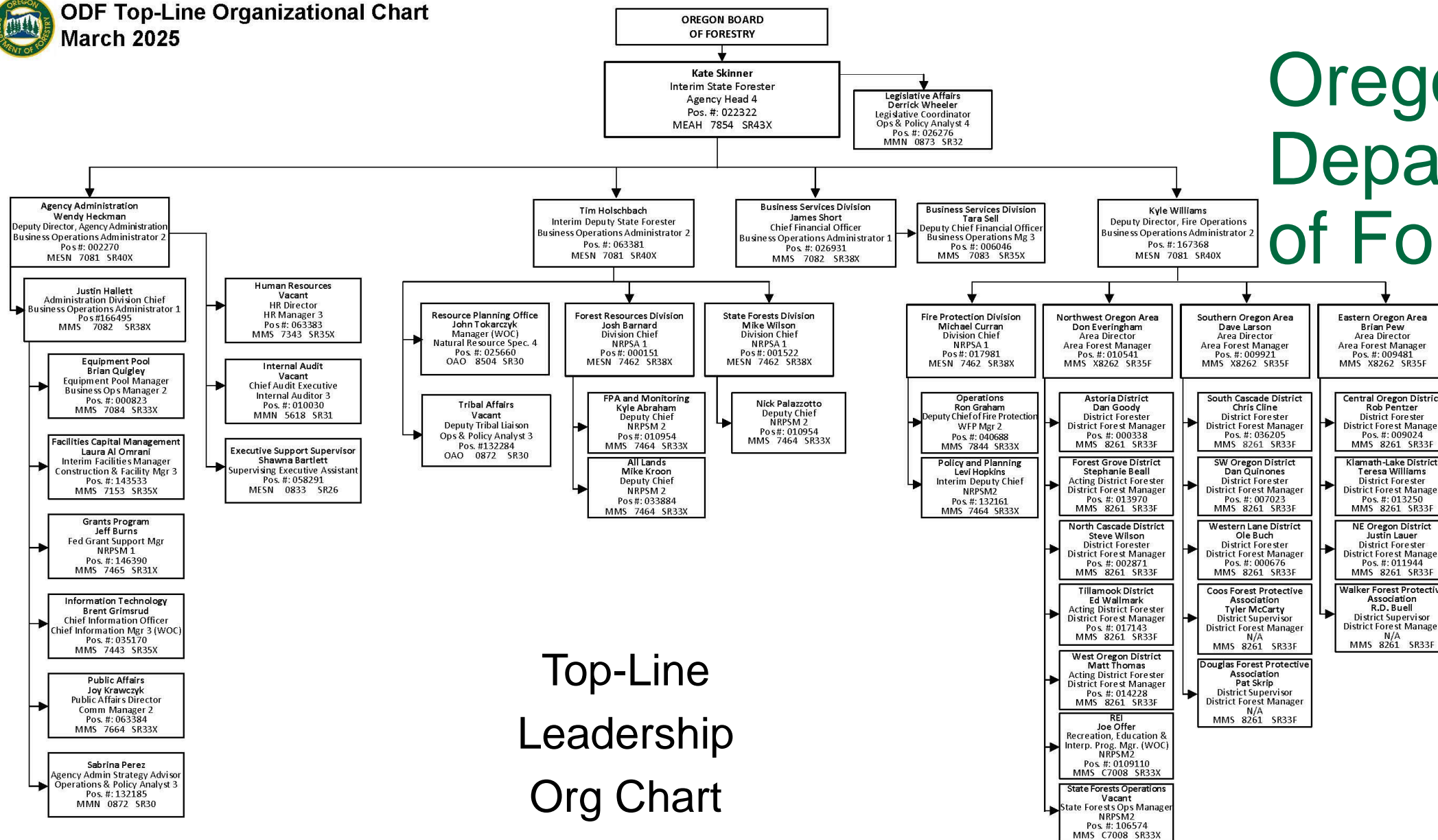


ODF Top-Line Organizational Chart

March 2025



Oregon Department of Forestry



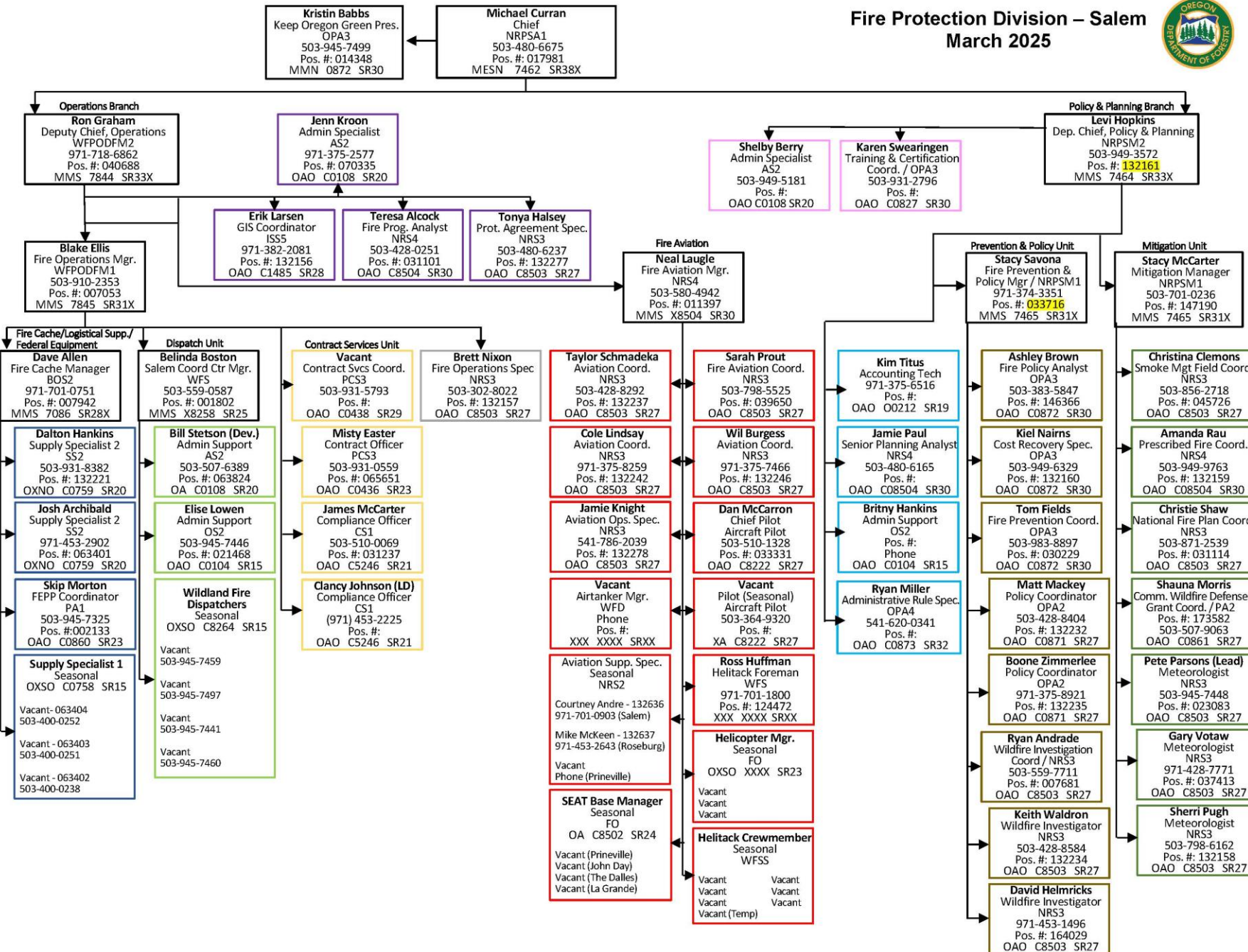
Top-Line Leadership Org Chart

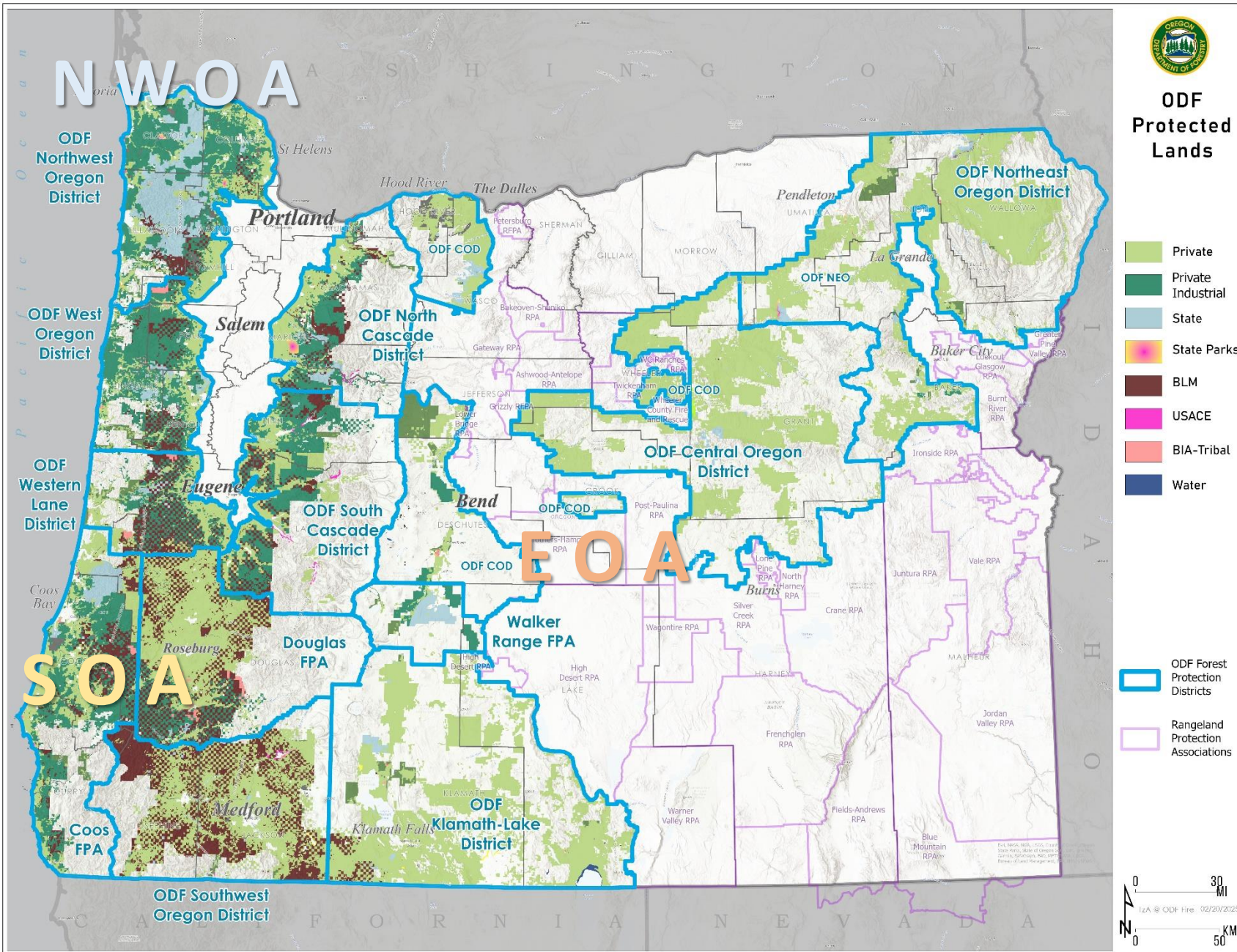
Fire Protection Division – Salem
March 2025



Oregon Department of Forestry

Protection Division Org Chart





ODF Protected Lands

- Showing Areas and Districts, of ODF
- Also showing Rangeland Fire Protection Associations
- Protection responsibility is intermingled with 1,000s of miles of common boundaries
- ODF protects ~16 million acres
- ODF fire protection is a partnership (landowners, ODF and the State)



Fire Protection Division

- Purpose, Policy, Primary Mission/Priorities
- Oregon's Complete and Coordinated Fire Protection System





Purpose, Policy, Primary Mission/Priorities



- Purpose:
 - Protect Forests from Fire
- Forest Protection Policy:
 - Preserve & conserve forest resources by preventing and suppressing forest fires
- Primary Missions/Priorities:
 - Protection of life
 - Protecting forest resources
 - Structural protection shall not inhibit forest resource protection

Thanks to Oregon's Complete and Coordinated Fire Protection System and partners throughout North America





Aviation, Crews, Resources



Statewide Coordination

Incident Resource Agreements -- Resources

413 Type 2 Crews

72 Faller
Single, Faller
Mods

66 Medical
(staff,
ambulances,
BCMU, REMS)

5 Mobile
Showers

240 Dozers
205 Excavators
186 Water Tenders
136 Engines
143 Log Truck/Loader/Shovel/Processors
92 Skidders/Skidgines
62 Feller Bunchers
60 Runners
41 Mulcher Masticators
40 Dump Trucks
14 Chippers

648 additional equipment, transports, overhead positions and services/supplies

- Crews and Cooperators
- 3 Incident Management Teams & equipment
- Coordination with federal agencies
- 50+ aviation companies
- Landowners provide annually:
 - 640 trained personnel
 - 445 pieces of equipment
- Resources from 12 ODF Districts
 - 200 engines
 - 400 firefighters
 - 15 large bulldozers
 - Look-outs and dispatchers





Aircraft Types and Missions

Aircraft Type	Total (50)	Aircraft Mission
Helicopter, Type 1 (Heavy)	3	Heavy Helicopter with 700 gallons of water capacity.
Helicopter, Type 2 (Medium)	8	Medium Helicopter with 200-300 gallons of water capacity.
Helicopter, Type 3 (Light)	4	Light Helicopter with 100-150 gallons of water capacity. Aerial delivery of fire fighters with 100-150 gallons of water capacity.
Single Engine Air Tanker	4	Single Engine Air Tanker with 800 gallons of fire retardant capacity.
Single Engine Scoopers	2	Scooping Single Engine Air Tanker with 800 gallons of fire retardant capacity
Detection Aircraft/Air Attack	8	Light Fixed Wing Aircraft used for Fire Detection and Aerial Supervision of Tactical Aircraft assigned to an incident.
Unmanned Aircraft Systems (UAS)	25	Type 3 UAS (some with infrared capability) support fire line operations such as mapping, situational awareness and detection.

Call When Needed (CWN) Aircraft

43 - Type 1 Helicopters
46 - Type 2 Helicopters
42 - Type 3 Helicopters
24 - Light Fixed-Wings
25 - SEAT/Fire Bosses
8 - Large Air Tankers
5 - UAS Service Providers
Total Aircraft: 198

"Severity" Contracted Aircraft

2 – FW Air Attack
4 – Single Engine Air Tankers
2 – Single Engine Scoopers
3 – Light Fixed Wing
3 – Heavy Helicopter
5 – Medium Helicopters
1 – Light Helicopter (Helitack)
Total Aircraft: 20

Association/District Contract Aircraft

3 - Medium Helicopters
3 - Light Helicopters (2 are Helitack)
1 - Light Fixed Wing
Total Aircraft: 7

State/Association-Owned Aircraft

2 - Light Fixed-Wing
20 – Unmanned Aircraft Systems
Total Aircraft: 22

ODF AVIATION RESOURCES

OREGON DEPARTMENT OF FORESTRY



2025



Aviation Resource Map

State/Association Owned

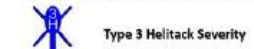


MMA



ATGS Association

Statewide Severity Contracted



Type 3 Helitack Severity



ATGS Severity



Detection Severity



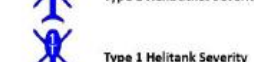
SEAT Severity



Scoop Severity



Type 1 Helibucket Severity



Type 1 Helitank Severity



Type 2 Helibucket Severity

District/Association Contracted



Detection District



Type 2 Helibucket District



Type 3 Helitack Association; Type 3 Helitack District

MAP FEATURES



ODF State Headquarters



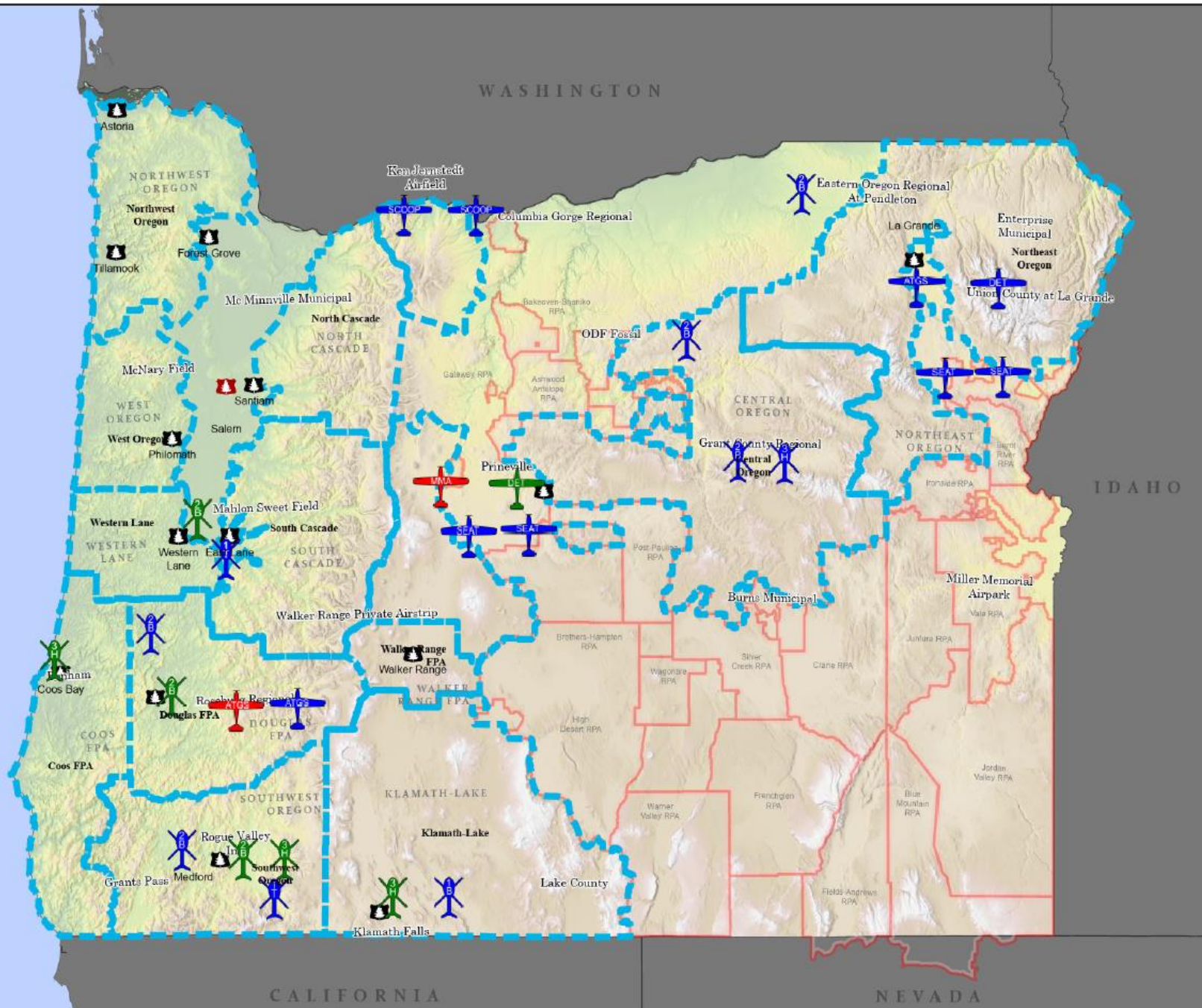
ODF District Headquarters



ODF Forest Protection Districts



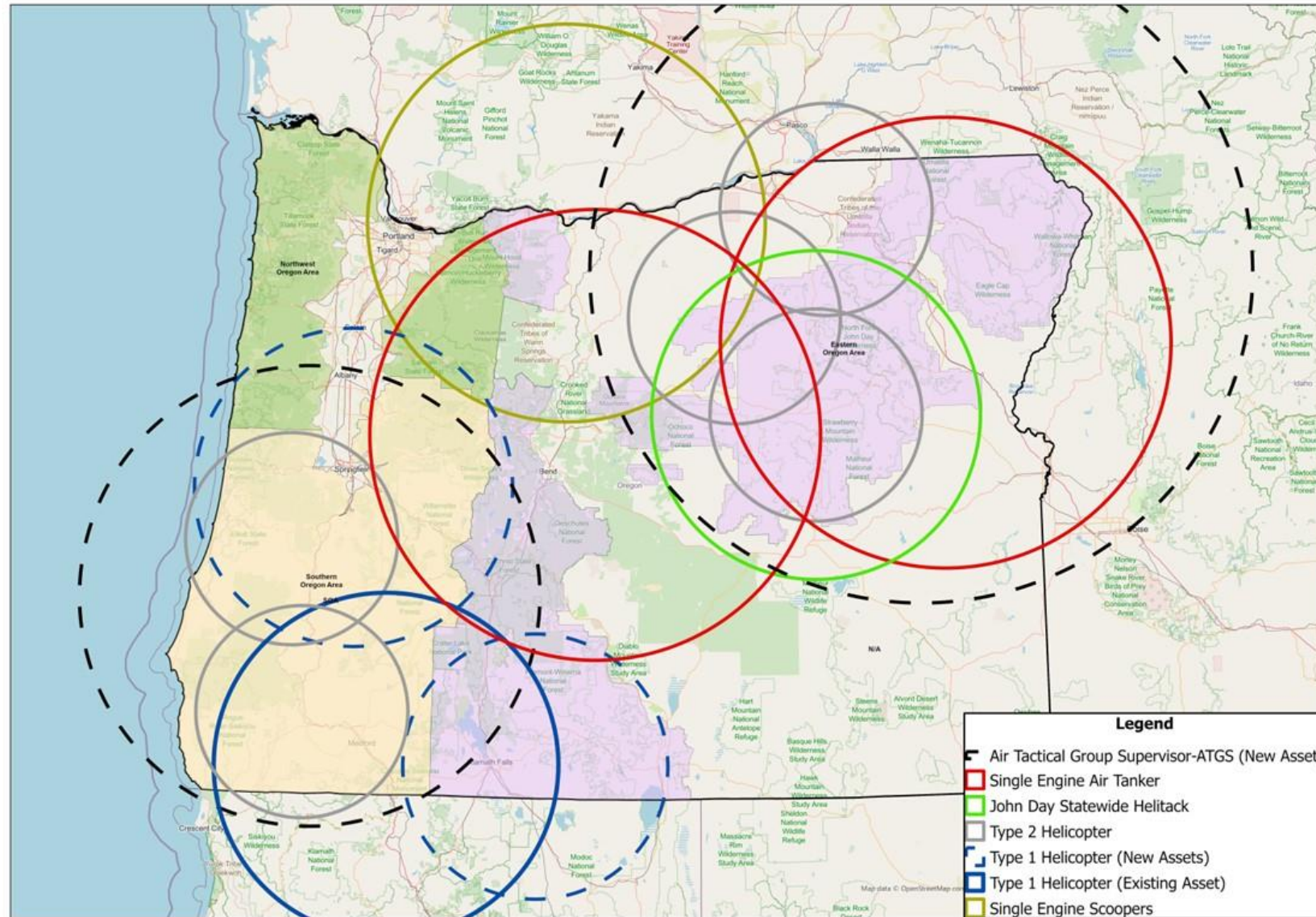
RFA Boundary





Aircraft 30-Minute Response Times

Statewide
Severity
Contracted
Aircraft
30 Minute
Response
Times



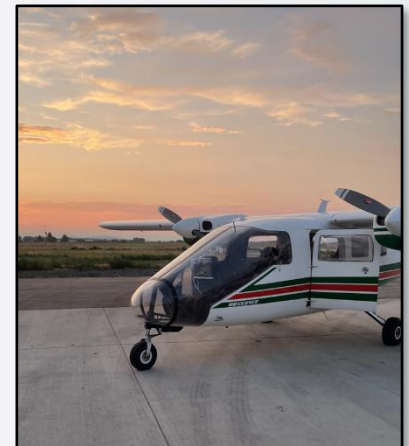
**2025 Statewide Severity Resources
30 Minute Flight Areas**





ODF Multi-Mission Aircraft

- IR and visible camera capability
- Video and images available in SOFSA



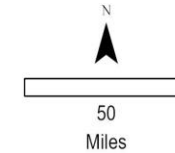


Smoke Detection Cameras

- 3 detection camera systems in Oregon totaling 184 sites statewide
 - ▲ EVS Forest Watch (ODF)
 - ▲ ALERTWest – (U of O Hazard Lab, USFS, BLM, CALFire)
 - ▲ Pano.AI - (WDNR, Utilities)



OREGON WILDFIRE DETECTION NETWORK 2025



- Joint Site Operational
- EnviroVision Solutions Sites Install Status
 - Operational
 - Planned
- ALERTWest Site Install Status
 - Operational
 - Planned
- Pano AI Sites Install Status
 - Operational
 - Planned
- Modeled Viewshed Detection Program
 - EnviroVision Solutions
 - ALERTWest
 - Pano AI
 - Joint Site
- 12 Mile Visibility Radius



02/19/2025 14:59
ODF Protection Division
North American 1983
Lambert Conformal Conic

[illegible]

DIST	CH/ENC	NWOA	DEC
AS	3A NICOLAI	★	A
TM	9E RECTOR		B
	9J ANGORA		B
	6F HEB0		B
	9B SO SADDLE	★	B
FG	1B BUXTON	★	B
	1D BALD HEAVEN		B
	16B GREEN MT		B
NC	11F HIGH HEAVEN	★	F
	11E SKAMANIA		F
	11C MT HOREB		F
	11D HALLS RIDGE		F
WO	6E MARY'S PEAK	★	E
	6D LAUREL MT		E
	6C PRAIRIE MT		E
	6A EUCHRE		E
	6B HEB0		E

DIST	CH ENC	SOA	DEC
SC	13E SCOTT MT	★	E
	13G COUGAR ROCK		E
	12D MT NEBO	★	D
	12F FAIRVIEW		D
WL	8A PRAIRIE MT	★	A
	8D ROMAN NOSE		A
DG	4B DOUGLAS SYS	★	B
	17E CPFA COOS	★	E
CS	10F SIGNAL TREE		G
	10D CPFA CURRY		G
	1F SEXTON MT	★	F
SW	1C LITTLE GRAYBACK		F
	1D FIELDER MT		F
	16F ROXY ANN	★	F
	16C SODA MT		F
	16A TALLOWBOX		F
	16J FLOUNCE ROCK		F

DIST	CH/JENC	EOA	DEC
WR	2A WALKER MT	★	A
	2B WASTINA		A
CO	7D GRIZZLY	★	D
	9E SUGAR PINE		D
	1F SNOWBOARD		D
	1C MADISON		D
	10D ALDRICH	★	D
	10B DIXIE		D
	14C STACKER	★	D
	14A FLAG POINT		D
NE	5A TIP TOP		A
	5G BLACK MT	★	A
	14B COURTNEY		A
	5F SPOUT SPRINGS		A
	13A MT EMILY		A
	13D BEAVER RIDGE		A

DIST	CH/ENC	EOA	DEC
KL	10A HAMAKER	★	A
	10G YAINAX BUTTE		A
	10H WELCH BUTTE		A
F&W & OSP	MONUMENT PEAK		W
	STEENS MT	★	X
	BLUE MT		Y
	ROUND PASS		Z

Name	CH	RX	TX	ENCODE	DECODE	MOBILE
District Repeater	1	151.1450	159.2850		Decode	TONES
District Repeater	2	151.1525	159.3150		is	A (1)=131
District Repeater	3	151.1600	159.2925		optional	B (2)=146
District Repeater	4	151.1600	159.4275			C (3)=151
District Repeater	5	151.1600	159.4425			D (4)=162
District Repeater	6	151.1675	159.3225			E (5)=167
District Repeater	7	151.1750	159.2925			F (6)=179
District Repeater	8	151.1825	159.3075			G (7)=141
District Repeater	9	151.1900	159.4425			H (8)=156
District Repeater	10	151.2050	159.3750			J (9)=173
District Repeater	11	151.2050	159.4350			
District Repeater	12	151.2200	159.3975			
District Repeater	13	151.2425	159.4050			
District Repeater	14	151.4375	159.3975			
District Repeater	15	154.1150	159.2550			
District Repeater	16	151.1750	159.4125			
District Repeater	17	151.4375	153.7850			
Red Net	18	151.3400	151.3400	156.7	156.7	
White Net	19	151.3100	151.3100	156.7	156.7	
Blue Net	20	159.2625	159.2625	156.7	156.7	
Orange Net	21	156.0225	156.0225	156.7	156.7	
Green Net	22	172.2250	172.2250	156.7	156.7	
NICS-Call UP	23	168.5500	168.5500			
NICS-OSDF-Tac	24	159.2400	159.2400	156.7	156.7	
NICS-USFS-Tac	25	168.2000	168.2000			
NICS-BLM-Tac	26	173.6750	173.6750			
NICS-Fire Marshall	27	154.2800	154.2800			
NICS-WDNR-Tac	28	151.4150	151.4150	103.5		
Fire Cache Tac 1	29	151.2350	151.2350	156.7	156.7	
Fire Cache Tac 2	30	151.2500	151.2500	156.7	156.7	
Fire Cache Tac 3	31	151.3550	151.3550	156.7	156.7	
Fire Cache Tac 4	32	151.3850	151.3850	156.7	156.7	
Fire Cache Tac 5	33	151.4150	151.4150	156.7	156.7	
Fire Cache Tac 6	34	151.4600	151.4600	156.7	156.7	
Fire Cache Tac 7	35	151.4750	151.4750	156.7	156.7	
Fire Cache Tac 8	36	151.4900	151.4900	156.7	156.7	
F/C Net 1 RPTR	37	151.4000	159.4650	131.8		
F/C Net 1 Backup	38	151.4300	159.4500	131.8		
F/C Net 2 RPTR	39	151.4450	158.8950	146.2		
F/C Net 2 Backup	40	151.4300	159.4500	146.2		
F/C Net 3 RPTR	41	151.2800	159.2700	162.2		
F/C Net 3 Backup	42	151.4300	159.4500	162.2		
VCALL10	43	155.7525	155.7525	156.7	156.7	
VTAC11	44	151.1375	151.1375	156.7	156.7	
VTAC12	45	154.4525	154.4525	156.7	156.7	
VTAC13	46	158.7375	158.7375	156.7	156.7	
VTAC14	47	159.4725	159.4725	156.7	156.7	
VMED29	48	155.3475	155.3475	156.7	156.7	
Air Guard	49	168.6250	168.6250	110.9		

Not all frequencies are licensed for statewide use. Please direct any questions to the ODF Radio Unit.

	RX	TX	ENC	DEC
W	151.1900	159.3525	131.8	151.4
X	151.1900	159.3525	151.4	151.4
Y	151.1900	159.3525	167.9	151.4
Z	151.2050	159.3375	167.9	151.4



Statewide Radio Network

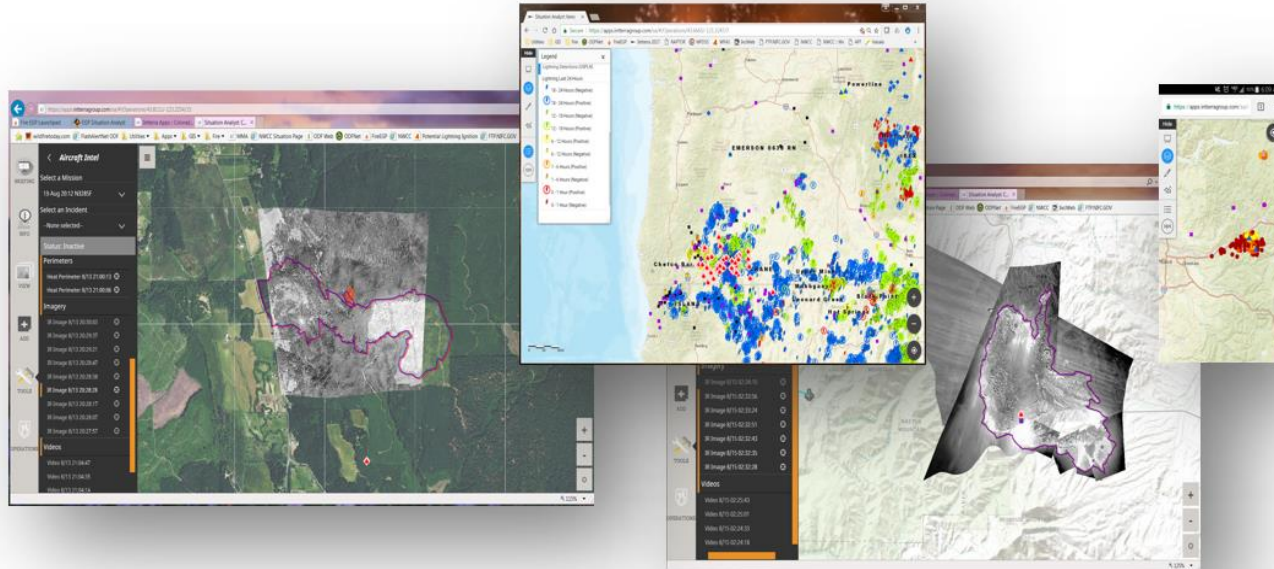




SOFSA: State of Oregon Fire Situation Analyst



- Statewide common operating picture of wildfire incidents and response for the Oregon Department of Forestry and the Oregon State Fire Marshal
- Available on any device with internet connection
- Register here:
<https://www.oregon.gov/odf/fire/pages/contact-sofsa.aspx>





Fire History

Fire Environment

- Recent Fire History
- Oregon Decadal Fire History Maps
- Large Fire Costs and Fire Suppression Effectiveness
- *NFDRS*
- *Pocket Cards*
- *Significant Fire Potential*





ODF Recent Fire History: Number of Fires

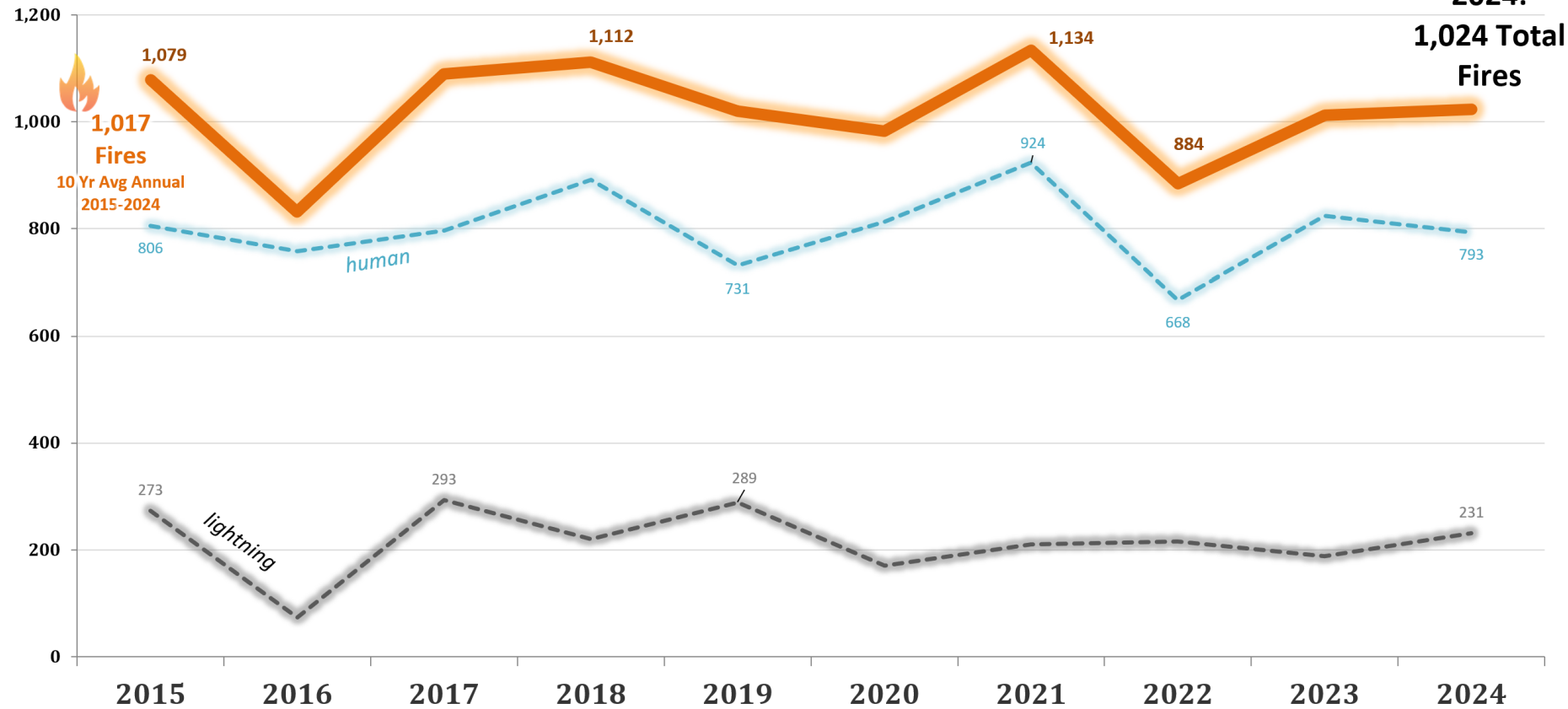


Oregon Department of Forestry Number of Fires 2015-2024

ODF Statistical Fires 02/04/2025.

Fires Under Investigation are accounted for in Human Category.

Number
of Fires





ODF Recent Fire History: Acres Burned

On average, 47% of Oregon wildfires start within ODF Districts, but only 18% of the state's acres burned are on ODF protected lands.

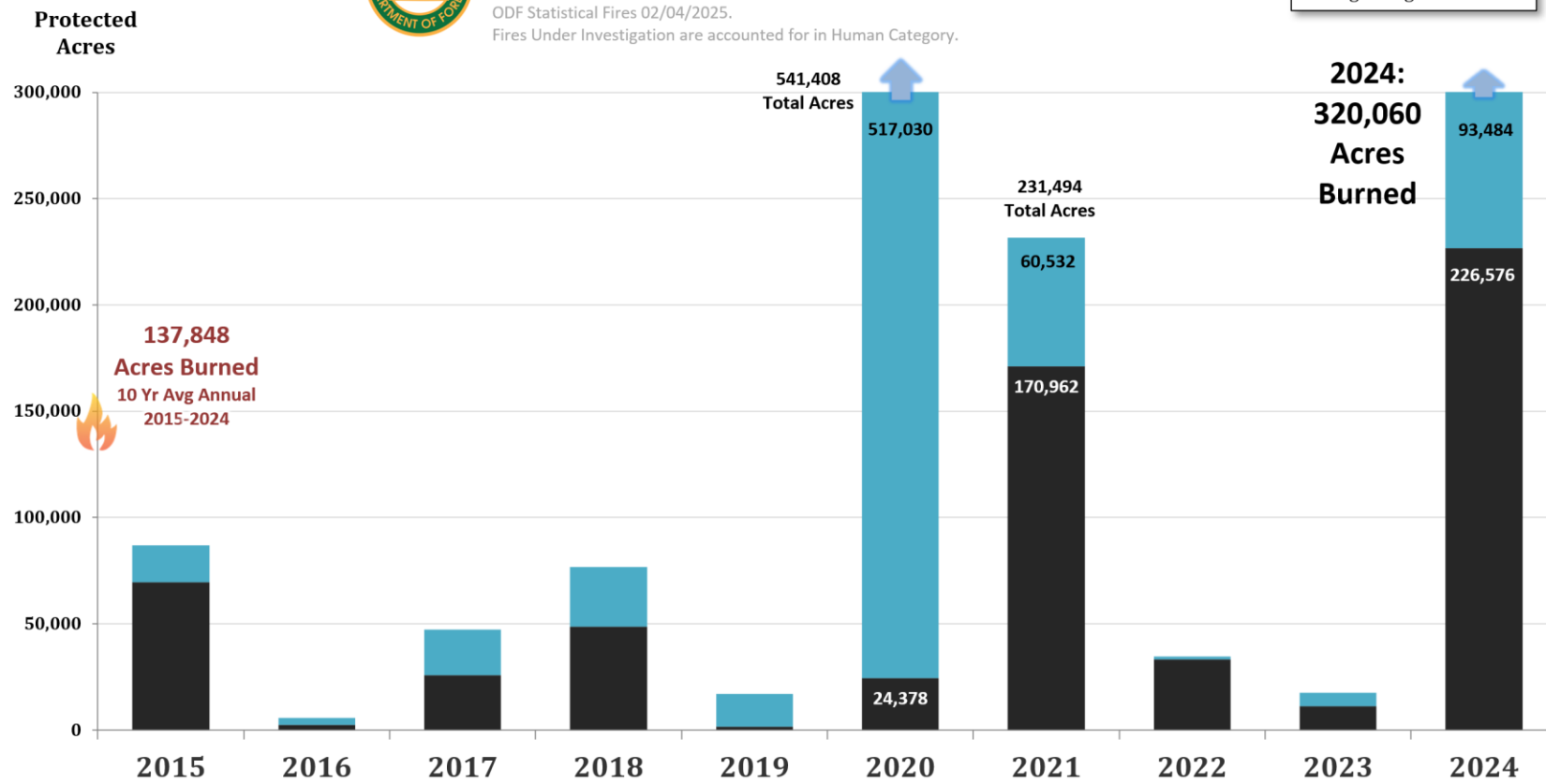
In 2024, ODF had 45% of statewide fires, and only 16% of statewide acres burned.



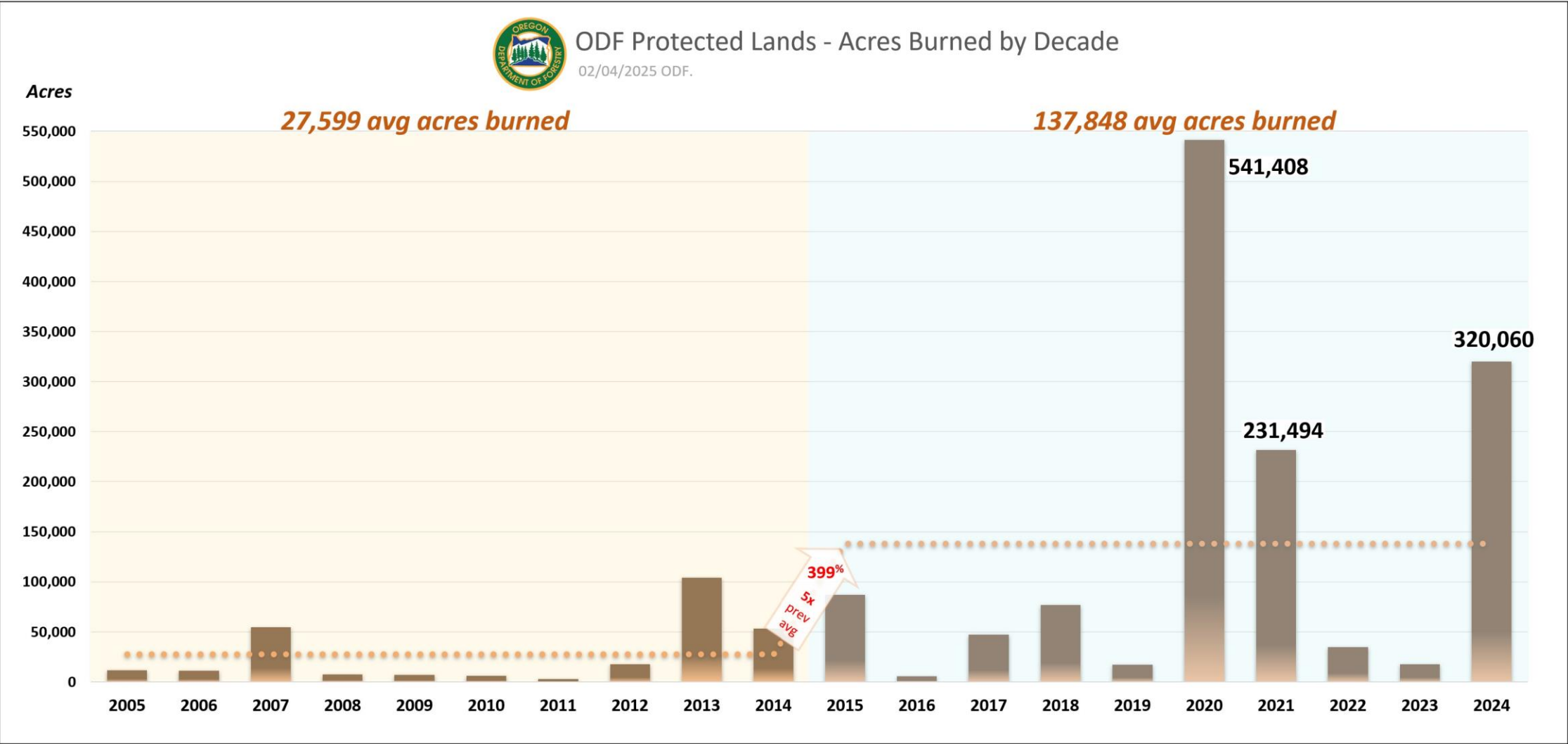
Oregon Department of Forestry Protected Acres Burned 2015-2024

ODF Statistical Fires 02/04/2025.

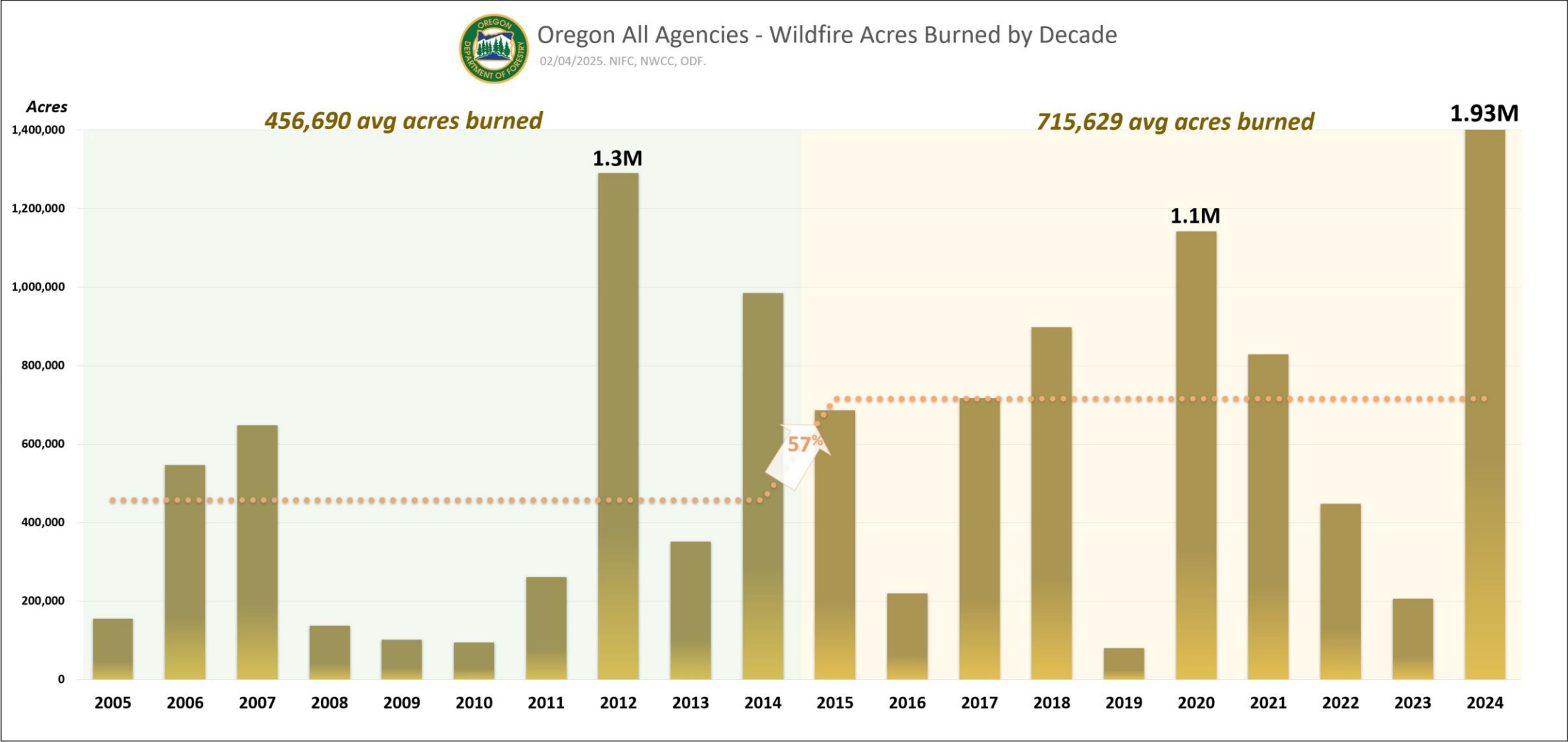
Fires Under Investigation are accounted for in Human Category.



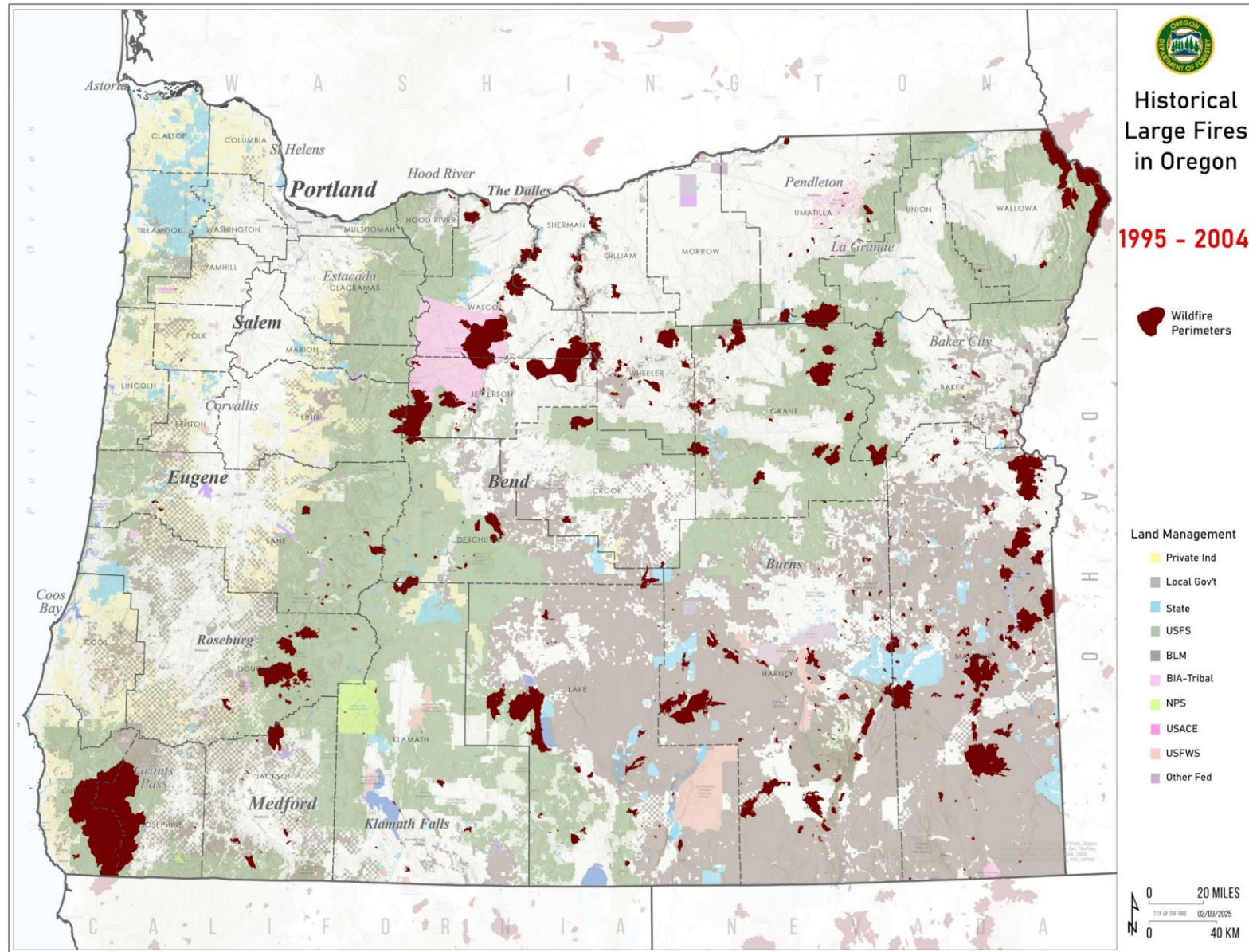
Acres Burned by Decade – ODF Protection



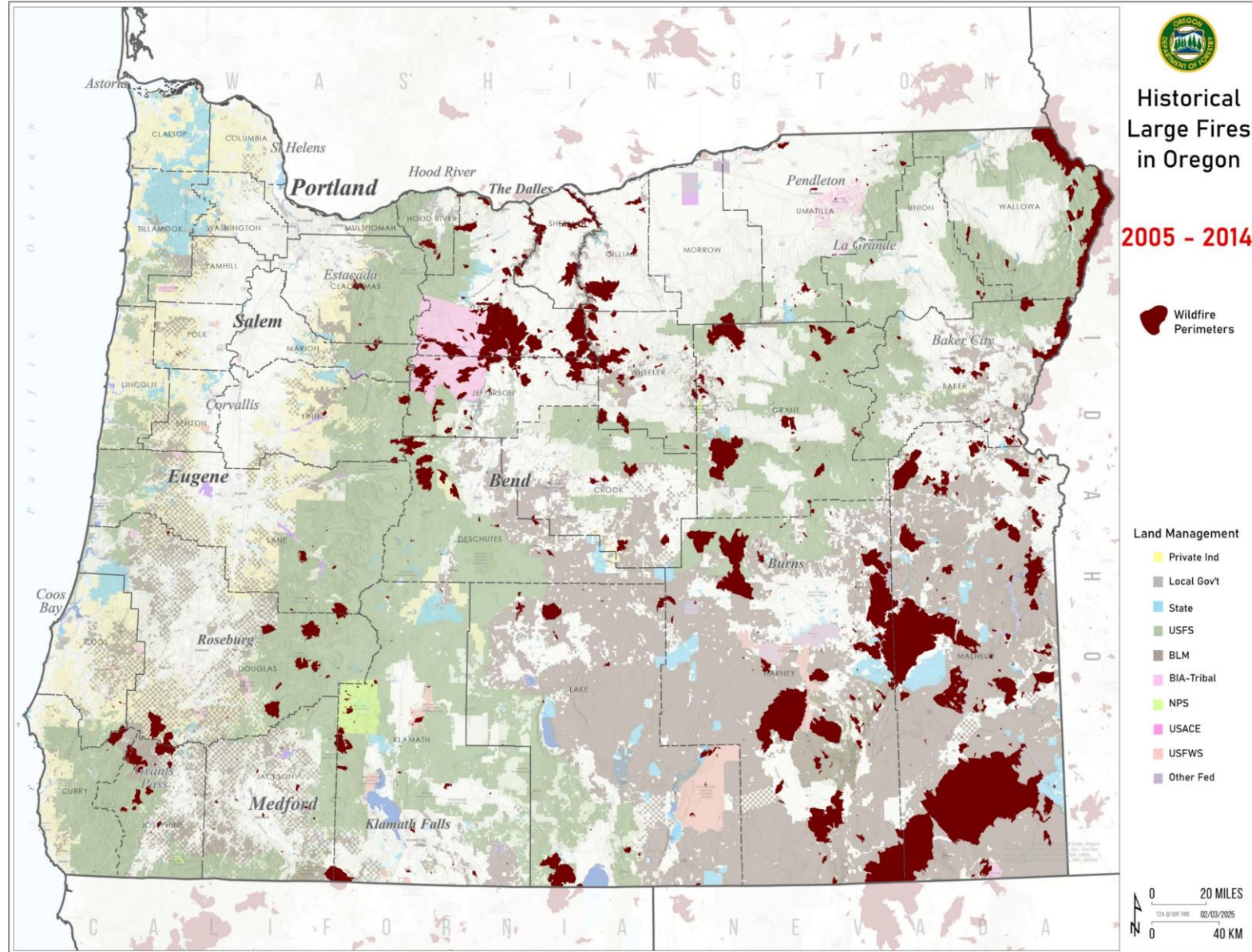
Acres Burned by Decade – All Jurisdictions



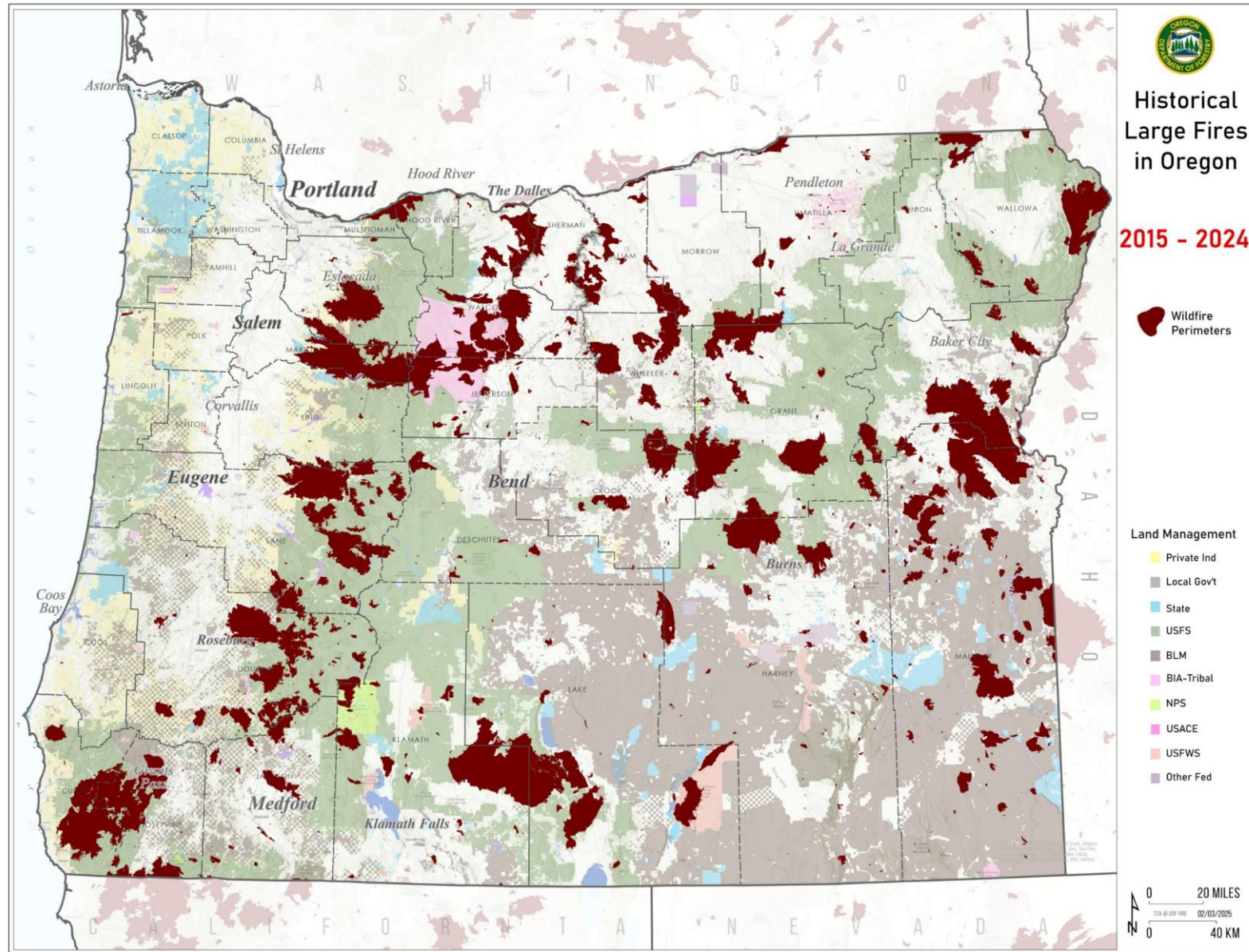
Oregon Large Fire History 1995-2004



Oregon Large Fire History 2005-2014



Oregon Large Fire History 2015-2024



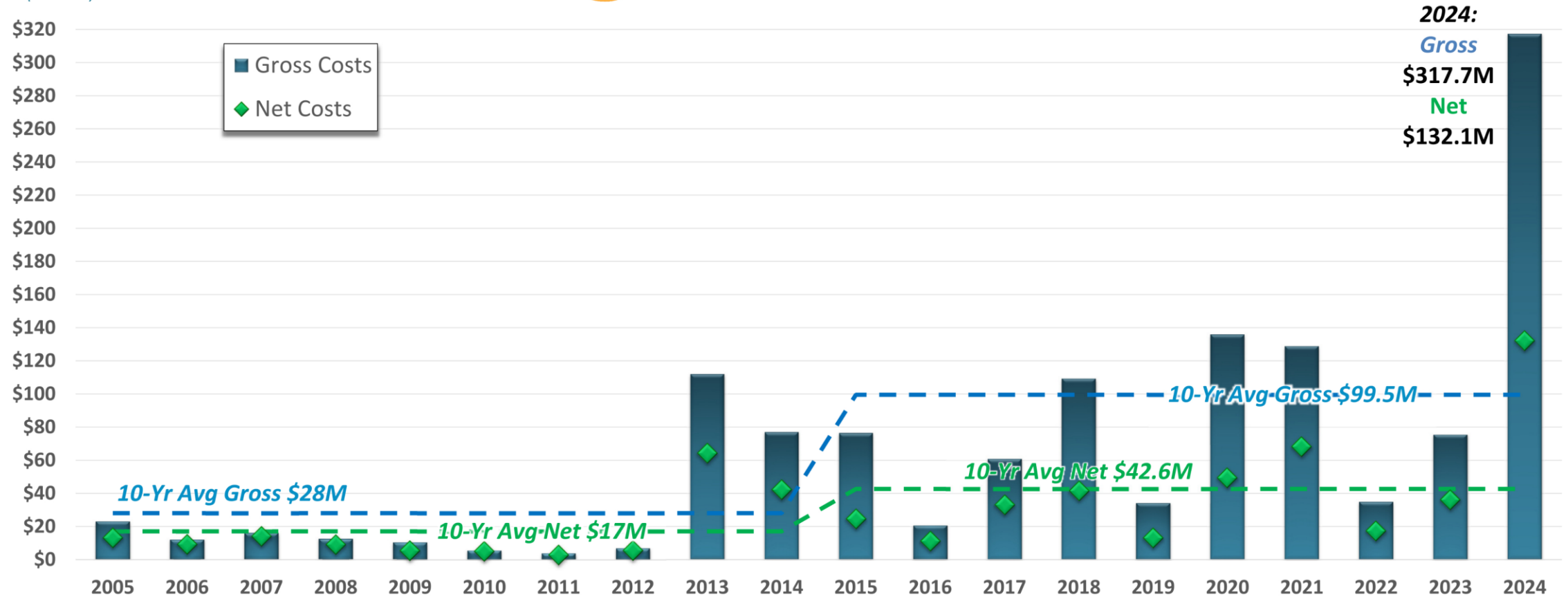
ODF Large Fire Costs 2005-2014



ODF Large Fire Costs 2005 - 2024

ODF Protection Finance and EFCC Data 02/04/2025.

Costs
(Millions)

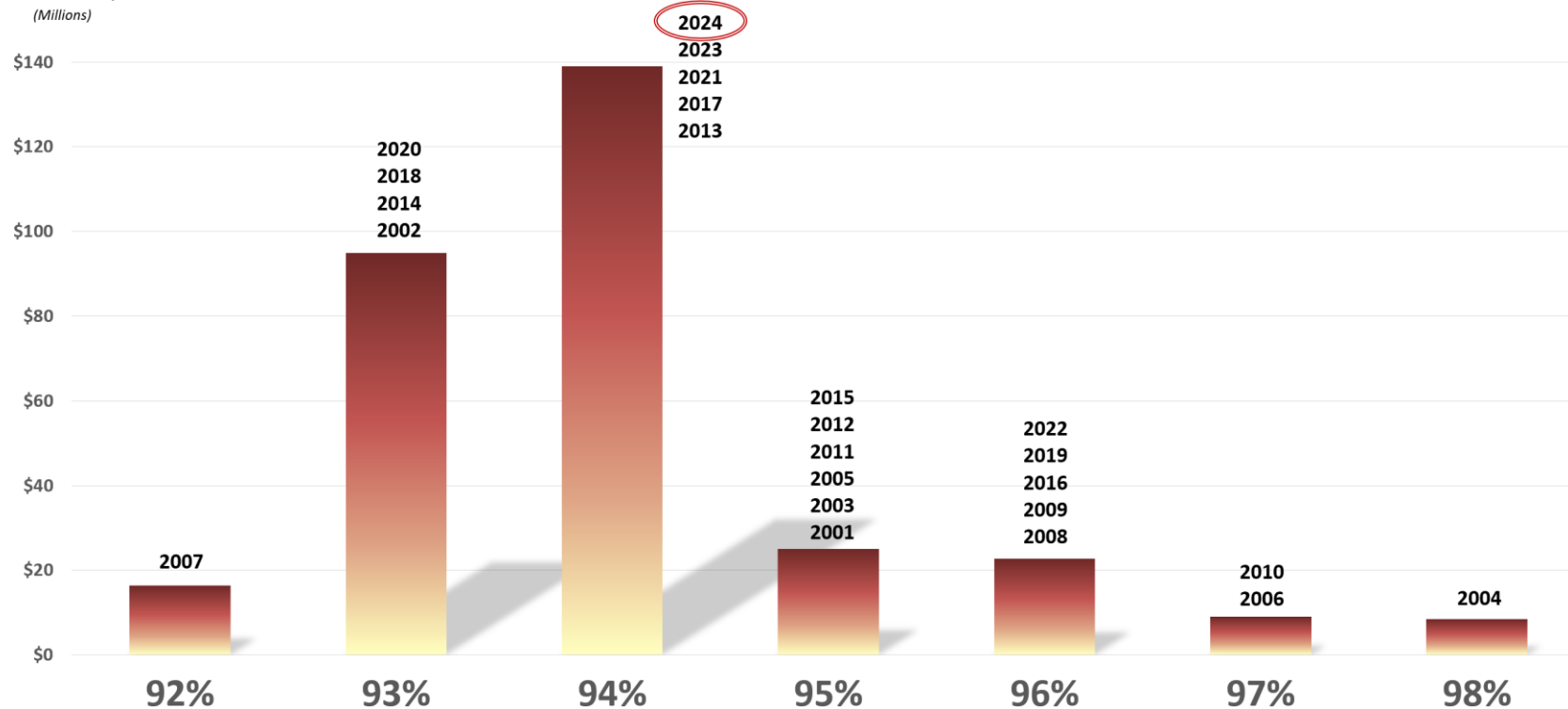




Keeping Fires Small Means Big Savings

ODF Fires data, Protection Finance and EFCC data 02/04/2025.
Showing Average of Gross Costs for Years at Each Performance Level (%).

Avg Cost
for Years at Each
Performance %
(Millions)

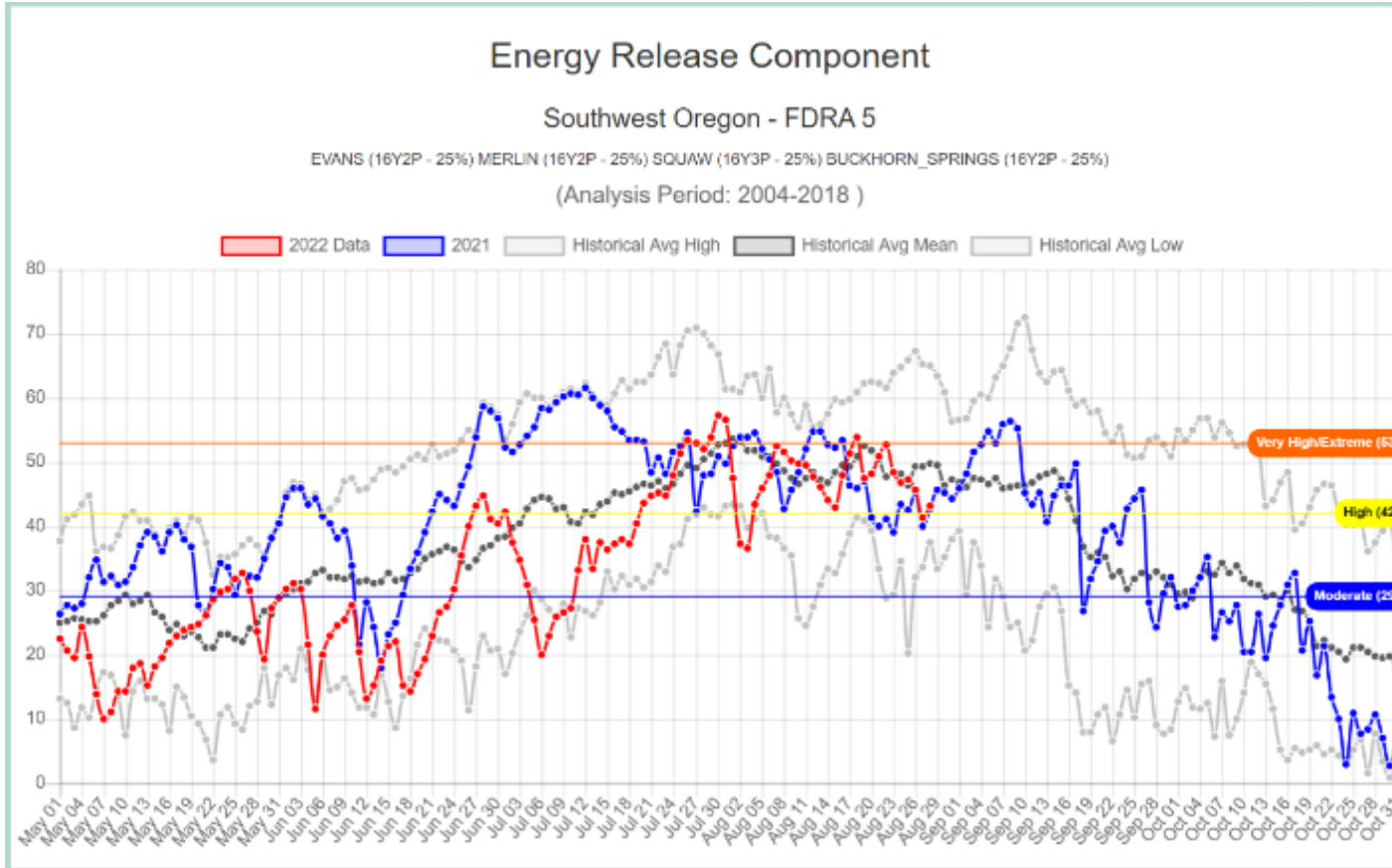


Key Performance Measure: Percentage of Fires Caught at 10 Acres or Less

ODF Fire Suppression Effectiveness



NFDRS



- NFDRS gives *ratings of potential* for fires to ignite, spread, and require suppression.
- **Outputs are shown in Charts, Pocket Cards, Fire Danger Operating Plans, Maps**

- The National Fire Danger Rating System (NFDRS) is a computer model that allows land management agencies to estimate fire danger across a landscape
- It is a decision support tool for management decisions and to support firefighter safety
- NFDRS was implemented in 1972 to give a consistent national approach to fire danger
- In 1994 ODF adopted the system and in 2022 ODF transitioned to the updated version 4 NFDRS



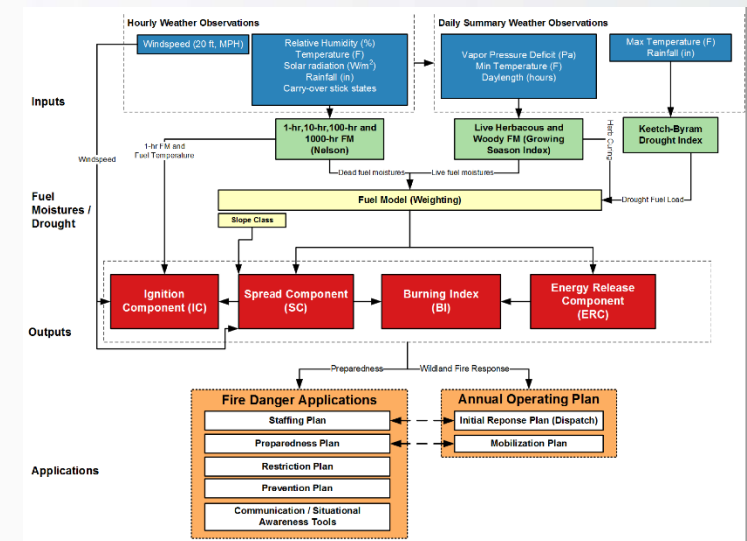
NFDRS Inputs and Outputs

Inputs

- Historical weather data from Remote Automatic Weather Station (RAWS) (temp, RH, wind, etc.)
- Historical fire data (date, size, cost (ODF), location)
- Fuel model, topography, climate class

Outputs

- **ERC** (Energy Release Component)
Available energy at the head of the fire (BTU/ft²)
- **SC** (Spread Component)
Rating of the forward rate of spread (Ft/Min)
- **BI** (Burning Index)
Difficulty to control fire
Combination of ERC & SC
- **IC** (Ignition Component)
Probability that a firebrand will cause a fire requiring suppression
- Fuel Moisture Estimates



Fuel Models of NFDRS V4

Table 8
New fuel models for NFDRS V4 and their mappings to Fire Behavior Fuel Models (FBFMs) from Scott and Burgan

FM Code	Fuel Type	FBFM Equiv	Code
V	Grass	Grass 2	GR2 (102)
W	Grass-Shrub	Grass-Shrub 2	GS2 (122)
X	Brush	Shrub 9	SH9 (149)
Y	Timber	Timber litter 1	TL1 (181)
Z	Slash	Slash-Blowdown 2	SB2 (202)



NFDRS Pocket Cards

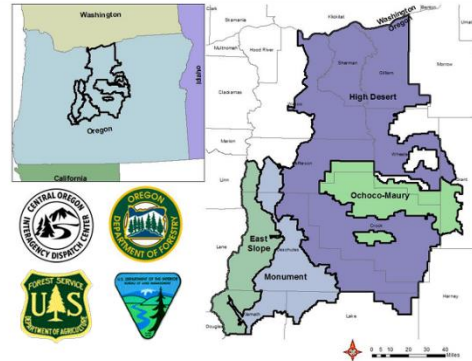
Central Oregon Interagency Fire Danger Pocket Card 2021

- National Forests: Ochocho NF, Deschutes NF
- Bureau of Land Management: Prineville District
- Oregon Department of Forestry: Prineville/Sisters Unit
- 4 Fire Danger Rating Areas
 - *East Slope* – Crest of the Cascades east to WUI boundaries
 - *Monument* – Newberry Volcanic Monument, Green Ridge, and WUI
 - *High Desert* – Lower Deschutes and John Day River canyons, shrub and grasslands
 - *Ochocho-Maury* – Western extent of the Blue Mountains

Local Thresholds for All FDRAs – Watchout

Combinations of any of these factors may greatly increase fire behavior!

- ✓ Sustained **20-foot Wind Speed** over 10 mi/hr
- ✓ **Relative humidity** less than 20% (or overnight recovery less than 45%)
- ✓ **Temperature** over 80 degrees
- ✓ **1000 hr fuel moisture** less than 11%



Interpretation of Charts:

- Title—Describes the Fire Danger Rating Area (FDRA) the chart applies to.
- Subtitle—Identifies weather stations (RAWS) utilized*, NFDRS fuel model, and years analyzed.
- **MAXIMUM**—Highest ERC recorded for that day during the analysis period.
- **AVERAGE**—Average ERC recorded for that day during the analysis period.
- Critical ERC—Threshold that captures the largest percentage of large fires in the lowest percentage of days as analyzed in FireFamily Plus.
- Year – Each FDRA chart graphs one recent year to remember.
- Fire name/year—ERC for the discovery date of a memorable fire.
- NFDRS 2016 Fuel Model Y—Timber

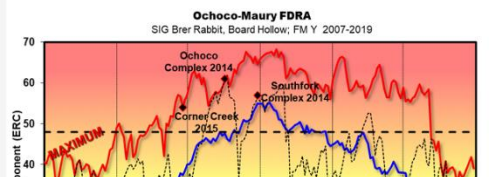
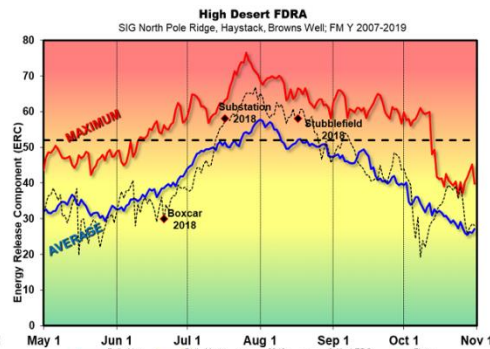
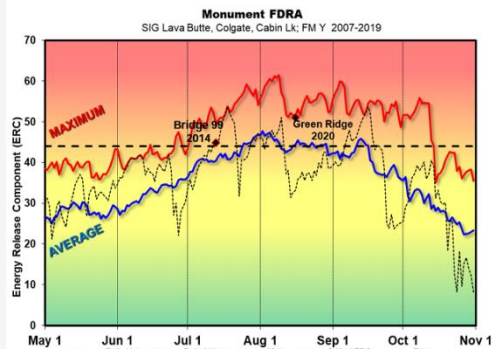
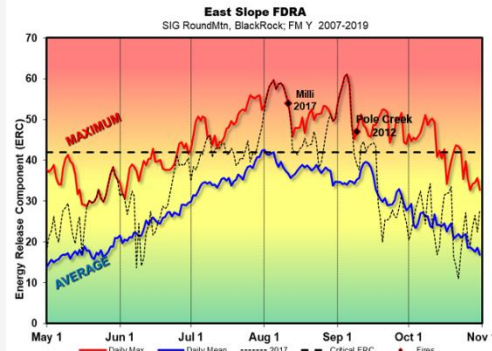


Extreme – Use extreme caution

Caution – Watch for change, especially WIND

Moderate – Lower potential, but always be aware

*All stations comply with NWCG weather station standards



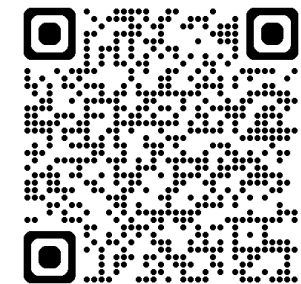
Remember what Fire Danger tells you:

- ERC displays seasonal fire danger trends calculated from temperature, RH, solar radiation, and precipitation
- Wind speed is NOT part of the ERC calculation
- Watch local conditions and variations across the landscape (e.g., Fuels, Weather, and Topography)
- Obtain local weather forecasts, note the WIND forecast

Past Experience

- Large Fires are often the result of fire danger combined with abundant

- Created for every Fire Danger Rating Area using local parameters and thresholds
- Describes watch-out conditions and past fire experience in terms of NFDRS
- Many in Oregon are interagency cards
- Visit this web page for current ODF pocket cards or capture the QR code below:
<https://www.oregon.gov/ODF/Fire/Pages/firefighting.aspx>



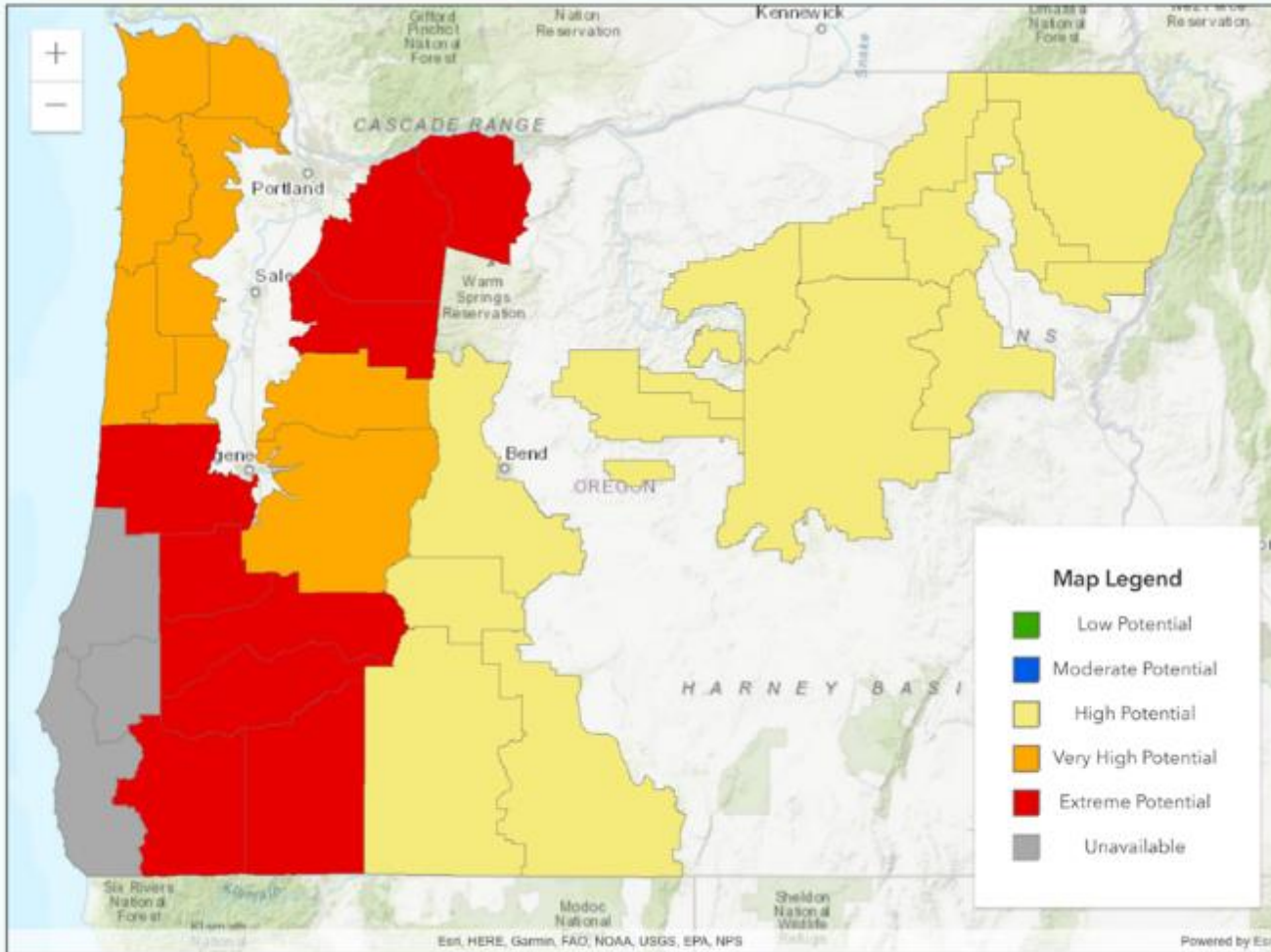
The ODF Significant Fire Potential Map displays ODF fire business thresholds indicating the potential for significant fires costing more than \$25K to occur. The map is not an [adjective class rating](#) or Fire Danger map, or a Regulated Use map. For Fire Danger maps try USFS WFAS [Observed](#) and [Forecasted](#) Fire Danger map products. For ODF Regulated Use and Industrial Fire Precaution Levels, please see the ODF [Statewide Regulated Use Map](#).

Map Explanation

Map Calculation

Weather Links

ODF Website



ODF Significant Fire Potential

- ODF has a website that charts daily NFDRS outputs for ODF Districts
<https://apps.odf.oregon.gov/SignificantFirePotential/#!/>
- The map shows the potential for **large costly** fires using an ODF cost factor
- Click any ODF District on the map to view daily NFDRS charts (ERC, etc.)



Fire Finances

- *Types of Employees & Resources*
- *Shift Tickets & Time Tracking*
- *Meal Breaks*
- *Line Supervisor Responsibility*
- *Additional Finance Reminders*





Types of Employees & Resources



- Government Personnel (State, Federal, County, etc.)
- Severity and Call-When Needed Aircraft
- Contract Equipment and Supplies
- Crews
 - Contract Crews (20 firefighters)
 - Inmate Crews (10 inmates)
 - District Crews (5-10 firefighters)
- Administratively Determined (AD) temporary state employees



Shift Tickets & Time Tracking

EMERGENCY EQUIPMENT/PERSONNEL SHIFT TICKET										1. DIV/UNIT		2. SHIFT	
3. OWNER/CONTRACTOR (name)						4. CONTRACT/AGREEMENT NUMBER				5. RESOURCE REQ NO.			
6. TYPE OF RESOURCE: GOVERNMENT <input type="checkbox"/> CONTRACT <input type="checkbox"/> PRIVATE <input type="checkbox"/>				7. ORDERED DOUBLE SHIFTED YES <input type="checkbox"/> NO <input type="checkbox"/>		8. INCIDENT NAME			9. INCIDENT NUMBER				
10. EQUIPMENT TYPE			11. EQUIPMENT MAKE/MODEL			12. REMARKS (released, down time and cause, problems, etc.)							
13. OWNER ID NUMBER			14. LICENSE, VIN, SERIAL OR TAIL #										
15. DATE MO/DAY/YR		16. EQUIPMENT USE (circle one) HOURS MILES HOBBS DAYS		19. FLIGHT CODE	20. OPERATOR/PERSONNEL NAME(S)	21. JOB	PERSONNEL TIME		24. PERSONNEL SIGNATURES				
		17. BEGIN 18. END					22. BEGIN 23. END						
25. DIV SUP/ODF REP PRINT				SIGNATURE			26. DATE SIGNED		27. POSTED BY				

XXXXXX

629-1-2-2-604

(02/06)

EEST.doc/Jaz F (Prot-Fire Finance Comm Forms)

- Shift Ticket Types
 - Aircraft Shift Tickets
 - Equipment/Personnel Shift Tickets (Government, Contract Equipment & Supplies, AD personnel)
 - Crew Shift Tickets
- Complete all fields on a shift ticket
 - Equipment information is just as important as time worked.
 - Line supervisor needs to sign.
- Federal Employees and Crews may use their agency shift tickets instead of ODF shift tickets.



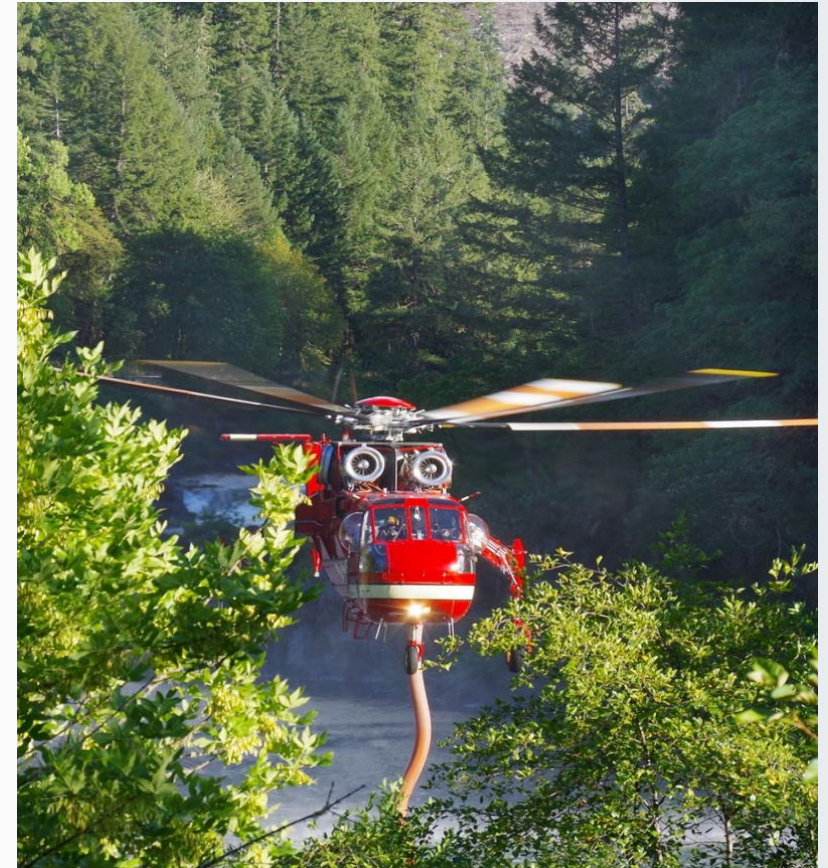
Meal Breaks

- ODF employees receive paid meal breaks at an incident per union contract.
- Contract firefighting resources record meal breaks on shift tickets.
- Other agency employees should follow their own agency policy regarding breaks on a fire and record that on shift tickets.
- Resources may not have to show a meal break if the fire line is uncontrolled (determined by the Incident Commander).



- Review shift ticket for accuracy and completeness.
- Sign shift ticket if you have witnessed the work as you are obligating ODF state funds.
- If resources did not take a meal break due to line being uncontrolled, note "No Meal Break -Uncontrolled".
- Collect the white and green copies of the shift ticket.
- Supervisor turns the white shift ticket into finance. This may be done via an incident specific email if set up by the IMT.
- Supervisor keeps the green copy of shift ticket as reference.
- Contract equipment without an operator is not paid.
- For contract firefighting crews, only the crew boss is paid for briefing.
- If resource has been notified of release, note the time and date of release on final shift ticket. Indicate travel time with 'TT' note next to time.
- At the end of the assignment, personnel will receive a time report. from the Finance Section, showing hours worked on.

Line Supervisor Responsibility





Additional Finance Reminders



- Incident Resource Agreements (IRA) are ODF specific contractor agreements. ODF also uses Federal VIPR agreements for contractors.
- Do not make any promises to contractors or landowners for obligation of state funds for repair of equipment or land. Talk to the Finance Section first.
- If items are lost/destroyed on the fire line (contractor or agency owned), document the loss on a General Message.
- ODF uses the ODF SharePoint platform for document storage, NOT FireNet.
- Specific finance instruction can be obtained from an ODF Finance Section Chief, ODF District Business Manager, or ODF Incident Business Advisor.

Safety and Risk Management

- *Overview*
- *Driving and Vehicle Use*
- *Claims*
- *Other Hazards*



- Work to Rest Ratio is 2:1, shifts should not exceed 16 hours per day
- After 14 days or before 21 days, a day of rest and rotation will be scheduled
- Accidents are reported to your immediate supervisor
- Incident Analysis Investigation Forms are completed for all injuries or accidents
- All injury or accident reporting forms are available from the Safety Officer
- Each agency is responsible to use their own forms for hospital or doctor visits

Safety & Risk Management Overview





Driving and Vehicle Use

Driving is one of the most dangerous things you will ever do at home and at work

- While on travel status requiring and overnight stay, a department vehicle may be used for transportation to meals and recreation
- Seatbelts are required at all times
- Cell Phones: Talking on a cell phone with a hands-free device while driving is acceptable in ODF vehicles and personal vehicles while on ODF business. Texting, e-mailing and holding a phone to your ear is not.

An Accident Report Packet for state-owned vehicles should be located in the glove box of every state-owned vehicle.



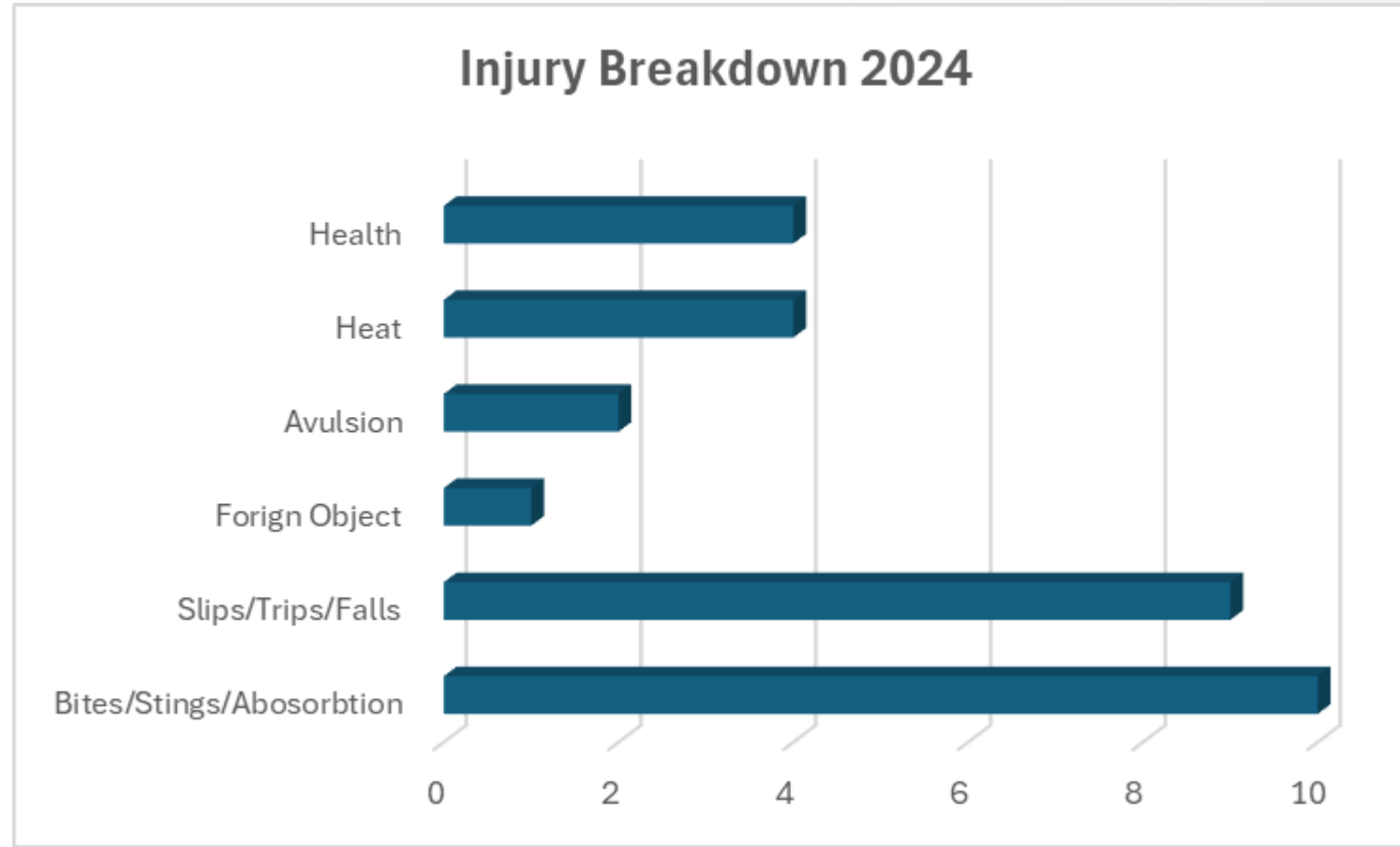


Claims

- If private property is damaged, property owners can file a claim through Risk Management
- Do not promise repair or reimbursement
- Forms are available in the Finance Section
- Claim forms are completed by the property owner and mailed to the address on the form

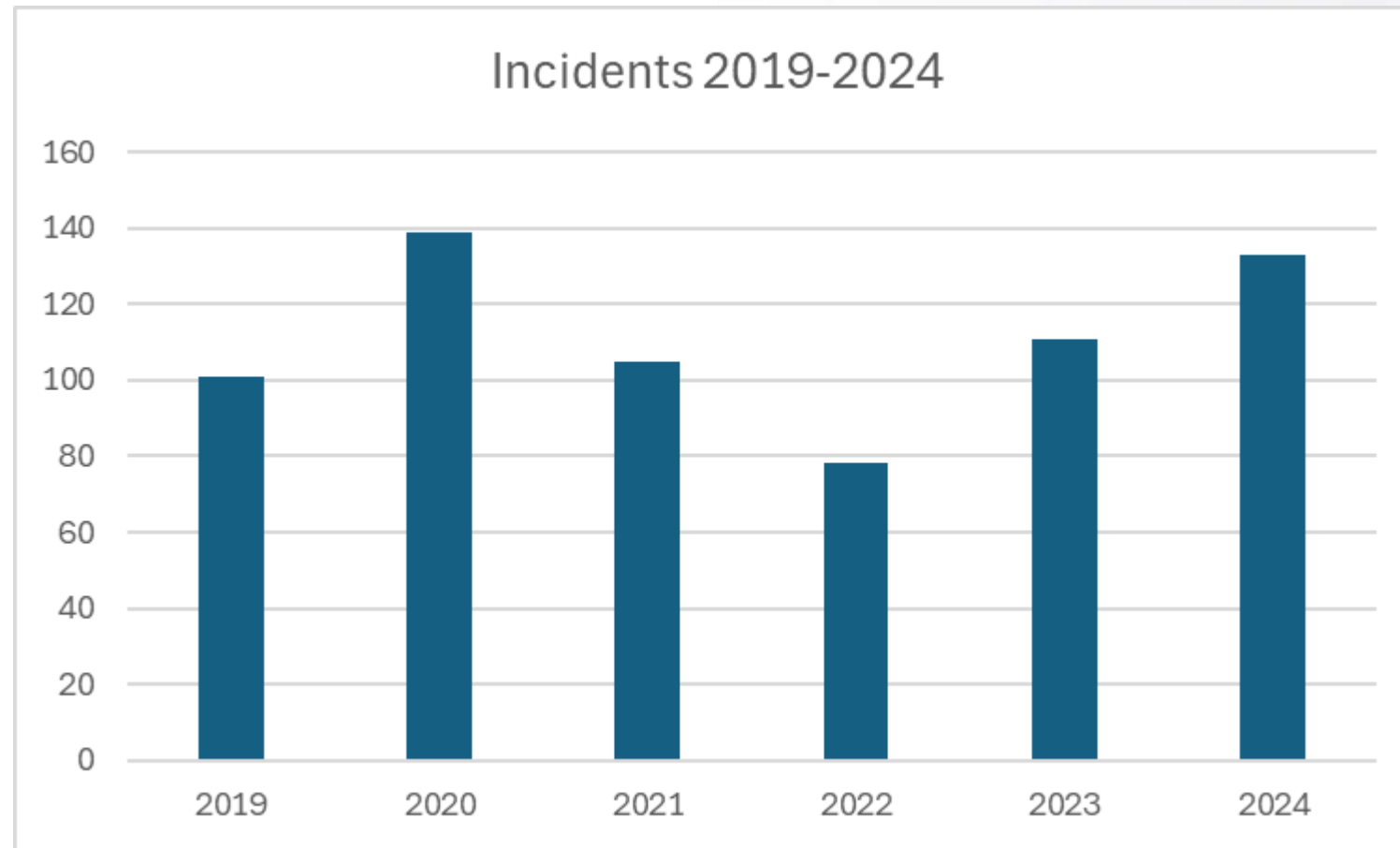


Injury Breakdown for 2024 Fire Season





6 Year Incident Stats





Other Hazards

- Smoke
- Poison Oak, Bees, Snakes, Bears
- Hazard trees and snags
- Abandoned mine shafts
- Steep, rugged terrain, rolling materials, loose and rocky soil
- Extreme weather conditions
- Downed power lines





Thank you

...and welcome to Oregon

